

CALIFORNIA JEWELS

Tuesday December 13, 2016

Los Angeles



Bonhams



CALIFORNIA JEWELS

Tuesday December 13, 2016 at 10am

Los Angeles

BONHAMS

7601 West Sunset Blvd,
Los Angeles, CA 90046
bonhams.com

PREVIEW

New York

Thursday December 1
10am to 5pm
Friday December 2
10am to 5pm
Saturday December 3
12pm to 5pm
Sunday December 4
12pm to 5pm
Monday December 5
10am to 5pm

Los Angeles

Friday December 9
12pm to 5pm
Saturday December 10
12pm to 5pm
Sunday December 11
12pm to 5pm

SALE NUMBER: 24099

Lots 1 - 312

CATALOG: \$35

BIDS

+1 (323) 850 7500
+1 (323) 850 6090 fax

To bid via the internet please visit
www.bonhams.com/24099

Please note that telephone bids must be submitted no later than 4pm on the day prior to the auction. New bidders must also provide proof of identity and address when submitting bids. Please contact client services with any bidding inquiries.

Please see pages 70 to 73 for bidder information including Conditions of Sale, after-sale collection and shipment.

INQUIRIES

Matthew Girling, FGA
Group Jewelry Director
+1 (212) 710 1305
matthew.girling@bonhams.com

Susan Abeles
Director, US Jewelry
+1 (212) 461 6525
susan.abeles@bonhams.com

Los Angeles:

Dana Ehrman, GG
Director, LA Jewelry
Claire De Biasio-Paris, GG
Kelly Sitek, GG
+1 (323) 436 5424

San Francisco:

Shannon Beck, GG
+1 (415) 503 3306

Automated Results Service
+1 (800) 223 2854

ILLUSTRATIONS

Front cover: Lot 257
Inside front cover: Lot 96
Inside back cover: Lots 192
Back cover: Lot 216

Please note that irrespective of origin, jadeite and rubies (and any jewelry pieces that contain them) may now be imported into the United States.

IMPORTANT HOLIDAY SHIPPING NOTICE

Bonhams will close for the holidays at 5pm on Thursday, December 22, 2016 and will reopen at 9am on Tuesday, January 3, 2017. If you would like to have your property shipped out prior to our closure, please contact the Cashiering department to submit payment for your purchases and shipping charges in full by 4pm on Friday, December 16, 2016.

Bonhams

220 San Bruno Avenue
San Francisco, California 94103
© 2016, Bonhams & Butterfields
Auctioneers Corp.; All rights reserved.
Bond No. 57BSBGL0808

DIAMONDS, COLORED STONES & PEARLS

The Jewelry department of Bonhams & Butterfields recognizes that there are many various forms of treatments and enhancements used in diamonds and colored stones in order to improve their appearance and or color. Techniques such as heat treatment have been used to improve the color and transparency of both sapphires and rubies in addition to other gemstones. Techniques such as oiling have been used to enhance the clarity of emeralds while dying has been used to effect the color of jade. Techniques such as heat treatment, oiling, resin impregnation, irradiation, color diffusion, dying, fracture filling, and HTHP are just a few off the techniques that are in use today. Prospective buyers are therefore reminded that unless otherwise noted in our catalog description it must be assumed that some form of enhancement may have been used and that such treatment may not always be permanent or detectable and that our estimates have taken such possibilities into account. As a matter of policy, Bonhams & Butterfields endeavors to obtain certificates from recognized gemological laboratories when such certificates are deemed crucial to the authenticity of a gemstone. It is not possible however to gain certificates for all items offered for sale and it is therefore recommended where there is no mention of a certificate that all prospective buyers consult with one of our department specialists prior to purchase of such items.

PLEASE NOTE: A number of laboratories issue certificates that give more detailed descriptions of gemstones, however there may not be consensus between different laboratories on the degrees, or types of treatment for any particular gemstone. Neither is there necessarily consensus between different laboratories, or private appraisers, on the grading of diamonds. All gemstone weights are approximations only and although an independent laboratory grading may be used in the catalog text, we cannot guarantee such gradings.

Images shown may appear smaller or larger than actual size.

Although we endeavor to mention in our descriptions significant defects, needed repairs, absent stones and the like, **WE DO NOT GUARANTEE THAT THE DESCRIPTIONS ARE COMPREHENSIVE.** Please examine all lots carefully. It is the responsibility of the prospective bidder, or his agent, to determine the condition of lots during the preview. Condition reports have been created for most lots in this auction, and are available upon request. Please contact the Jewelry department at least two days prior to the sale date for additional information.

It is the responsibility of the buyer to investigate any applicable restrictions on purchased property and to obtain any export or import licenses and/or certificates as well as any other required documentation before shipping. The buyer's inability to export or import any such items or to do so timely shall not serve as the basis for any cancellation or rescission of the sale or any delay in payment. Prospective buyers who are uncertain as to whether a lot is subject to these restrictions or any other restrictions on importation or exportation are advised to consult with the specialist department in which the property is offered.

REGULATED SPECIES MATERIALS AND CITES PERMITS

The export of a lot from the United States or import into certain countries may be subject to export or import regulations, licensure and/or other restrictions; in particular, lots containing plant or animal materials such as ivory, rhinoceros horn, tortoiseshell, coral, whalebone or certain types of woods, irrespective of age or value, may require the granting of one or more export or import licenses or certificates, or may be banned from import altogether by some countries. Moreover, the ability to obtain an export license or certificate does not insure the ability to obtain an import license or certificate in another country. Lots that contain such regulated species materials may also not be eligible for exportation or for re-importation into the United States if they are not at least 100 years of age, and, under current law, lots containing African Elephant Ivory may no longer be re-imported into the United States regardless of age. In addition, resales of lots containing certain regulated species materials may be subject to restrictions in some jurisdictions.

Lots noted in the catalog with a **Y** next to the lot number contain one or more such regulated plant or animal materials. **It is the buyer's responsibility to investigate any such restrictions and to obtain any relevant export or import licenses. Please note that this process is governed by local authorities and may take considerable time. Regardless of any delay in the obtaining of an export or import license or certificate or denial of a license's or certificate's issuance, purchased lots shall be paid for in accordance with the Conditions of Sale, and any such delay or denial shall not serve as the basis for cancellation of any sale.** Prospective buyers are advised to obtain information from the relevant regulatory authorities regarding export and import restrictions, requirements, and costs prior to bidding.

Prospective buyers should also check with their local (e.g. state) regulatory authorities regarding any local restrictions and/or permit requirements that may apply with respect to purchases of regulated species materials, including without limitation purchases of items containing elephant ivory or rhino horn. For example, we are advised that New York buyers of any lot containing elephant or mammoth ivory or rhino horn will be responsible for obtaining a New York State permit before taking possession of the lot within New York State, and that the State of New Jersey has banned the import of items containing elephant or marine mammal ivory or rhino horn into that state.

Upon request, Bonhams can refer the purchaser to a third party agent to assist the purchaser in attempting to obtain the appropriate licenses and/or certificates. However, there is no assurance that any necessary licenses or certificates can be obtained. Please contact the Specialist Department for a suggested list of shipping agents prior to placing a bid if you are uncertain as to whether a lot is subject to export/import license or certificate requirements or related restrictions.

WATCHES

Although we endeavor to mention in our descriptions significant defects, needed repairs, absent stones and the like, **WE DO NOT GUARANTEE THAT THE DESCRIPTIONS ARE COMPREHENSIVE.** Please examine all watches carefully. It is the responsibility of the prospective bidder, or his agent, to determine the condition of watches during the preview. Except as expressly set forth in the Conditions of Sale, all watches are sold "as is". We do not guarantee the accuracy or operation of any watch function such as timekeeping, chronograph, calendar, repeater or register.

We make no judgments as to whether diamond dials or diamond bezels originated at the factory or are later additions.

IMPORTANT NAMES & NOTICES (CONTINUED)

unless described in the catalog description of a lot, and a manufacturer's refusal to service or repair a timepiece due to the presence of replacement parts shall not constitute grounds to rescind a sale.

Case screw-backs have been loosened for examination and viewing by Bonhams, and should be resealed by purchasers for water resistance.

The dimensions given refer to the diameter of circular watch cases, excluding the lugs (in the case of a wristwatch) or the pendant (in the case of a pocket watch). For watches of other shapes, the corresponding width is given.

THE FOLLOWING IS AN EXPLANATION OF THE CONDITION STATEMENTS USED.

- 1. EXCELLENT:** Case with sharp edge detail and possibly with a slight trace of wear; may have minor light surface scratches; case back opening grooves (if any) with sharp detail. Dial with original finish (unless stated) and without toning; the applied indexes (if any) and hands in mint condition. Winding and setting functions were operative at the time of cataloguing (unless otherwise stated) but may need service subsequently. Movement may need service.
- 2. VERY GOOD:** Case edge detail possibly rounded by light wear or polish; may have light surface scratches and small dents; case back opening grooves (if any) possibly with some light burring. Dial possibly with light toning; the applied indexes (if any) and hands in very good condition (unless stated). Movement possibly with a few minor tool marks. Winding and setting functions were operative at the time of cataloguing (unless otherwise stated) but may need service subsequently. Movement may need service.
- 3. GOOD:** Case possibly with rounded edge detail; may have numerous light to medium surface scratches and some dents; case back opening grooves (if any) possibly with some medium burring. Dial possibly with medium toning (unless stated); the applied indexes (if any) and hands may have light surface scratches and toning. Movements possibly with numerous tool marks. Winding and setting functions were operative at the time of cataloguing (unless otherwise stated) but may need service subsequently. Movement may need service.

INCLUDING PROPERTY FROM

- A Private Charitable Foundation
- A Private Oregon Collection
- A Florida Private Collector
- A New York Collector
- A Lady

NAME	LOT NUMBER
A. Jaffe	138
Alexander Laut	265
Andreoli	130
Angela Cummings	216, 229, 268, 278
Antonio Pineda	298
Athena	22
Barry Kronen	182
Boucheron	9
Buccellati	224
Bulgari	83, 253, 254, 256, 309
Calgaro	279
Cartier	11, 35, 92, 129, 172, 218, 241, 248, 274, 277
Carvin French	7, 41, 77, 118, 165, 215, 222, 236, 255, 296
Cathy Waterman	20, 27, 70, 78, 194
Chopard	169, 280
David Webb	252
Donald Claflin	234, 235
Drayson	209
Elizabeth Gage	15
Elsa Peretti	4
Erica Courtney	188
Gurhan	18, 24, 28
Hammerman Brothers	246
Hermès	6, 8, 12
Jose Hess	2, 26
Longines	91
Mauboussin	237
Mikimoto	114
Mossalone	212
Paloma Picasso	17
Pasquale Bruni	80
Patek Philippe	291
Peter Lindeman	42
Piaget	228
Pierer	286
R. Stone	251
Renstein/Ross	39
Rialto	79
Schlumberger	217, 257
Seaman Schepps	134
Sonia B	93
Tiffany & Co.	1, 4, 16, 17, 32, 75, 103, 124, 166, 211, 213, 216, 217, 234, 235, 249, 250, 257, 260, 282
Van Cleef & Arpels	128, 219, 244
Verdura	263
Vitali	230
Zoccai	185
Zorab	271, 273



1

A DIAMOND AND 18K BI-COLOR GOLD RING, TIFFANY & CO.

signed Tiffany & Co. (partially obstructed); estimated total diamond weight: 1.05cts; size: 4 3/4 (with permanent sizer)

US\$1,000 - 1,500

2

A PAIR OF DIAMOND AND 18K GOLD EARRINGS, JOSE HESS

signed Jose Hess, no. 2011608A; estimated total diamond weight: 1.75cts; length: 1 3/8in.

US\$2,000 - 3,000

2

3

A DIAMOND AND GOLD BANGLE BRACELET AND EARRING SET

estimated total diamond weight: 5.75cts; gross weight approximately: 41 grams; bangle diameter: 2 1/2 in.; earring length: 1in.

US\$1,800 - 2,500

4

A DIAMOND AND 18K GOLD HEART PENDANT, ELSA PERETTI FOR TIFFANY & CO.

signed Tiffany & Co., Peretti; estimated total diamond weight: 1.05cts; dimensions: 1 1/2 x 1 1/4in.

US\$1,200 - 1,500

4

5

5

A CITRINE, DIAMOND AND 18K BI-COLOR GOLD NECKLACE

estimated total diamond weight: 5.50cts; length: 15in. (with 3/4in. extension)

US\$5,000 - 7,000

6

A DIAMOND AND 18K GOLD RING, HERMÈS, FRENCH

of diamond-set bow motif; signed Hermès, no. 56685, with French assay and maker's marks; size 4 1/2

US\$1,500 - 2,500



6

7

8

11

10

9

12

7
AN 18K GOLD OPEN LINK CHAIN COLLAR NECKLACE, CARVIN FRENCH
with maker's mark; weighing approximately: 88 grams; length: 15in.

US\$2,000 - 4,000

8
A DIAMOND AND 18K GOLD RING, HERMÈS, FRENCH
signed Hermès, no. 26915; with French assay and maker's marks; size 5 1/2

US\$1,800 - 2,500

PROPERTY FROM A PRIVATE OREGON COLLECTION

9
A DIAMOND AND 18K GOLD BRACELET WRISTWATCH, BOUCHERON
case, dial and bracelet signed; case no. AB10484; gross weight approximately: 67 grams; length: 7in.

US\$2,000 - 3,000

10
A YELLOW SAPPHIRE, DIAMOND AND GOLD RING
oval-shaped orangy-yellow sapphire approximately: 12.35 x 9.25 x 5.49mm; estimated total diamond weight: 0.90ct; size: 8

US\$3,000 - 5,000

PROPERTY OF VARIOUS OWNERS

11
A DIAMOND AND 18K BI-COLOR GOLD RIVIÈRE NECKLACE, CARTIER
signed Cartier, no. 50266; estimated total diamond weight: 8.00cts; length: 15 3/8in.

US\$15,000 - 20,000

12
THREE ENAMEL AND GOLD PLATED PRINTED BANGLE BRACELETS, HERMÈS
all signed Hermès, Paris; diameter: 2 1/2in.

US\$1,000 - 1,500



13



14



15



16



17



18



**13
A PAIR OF CULTURED PEARL, DIAMOND
AND 18K GOLD EAR CLIPS**

pearls approximately 11.0 and 6.0mm;
length: 1in.

US\$800 - 1,000

**14^Y
A CORAL, DIAMOND AND GOLD RING,
CIRCA 1960**

estimated total diamond weight: 1.20cts;
size: 5 1/2

US\$2,000 - 3,000

**15
A RUBY AND 18K GOLD BAND,
ELIZABETH GAGE, 1993**

signed Gage, with English hallmarks, London,
1993; with signed pouch; size: 6

US\$800 - 1,000

**16
AN 18K GOLD 'LIBRA' ZODIAC
PENDANT, TIFFANY & CO., CIRCA 1970**

signed Tiffany & Co., Italy; weighing
approximately: 59 grams; diameter: 1 3/4in.

US\$2,500 - 3,500

**17^Y
A CORAL, CULTURED PEARL AND 18K
GOLD NECKLACE, PALOMA PICASSO
FOR TIFFANY & CO., 1981**

comprising twelve strands of cultured pearls
and coral beads, measuring approximately
3.4 to 3.2mm, signed Tiffany & Co., Paloma
Picasso, 1981; length: 15 1/4in.

US\$5,000 - 7,000

**18
A PAIR OF CULTURED PEARL AND HIGH
KARAT GOLD BRACELETS, GURHAN**

signed Gurhan, no. BD987 and BC292;
diameter: 2 1/4in. (adjustable)

US\$1,500 - 2,000



19



20

21



22



23



24

19

A DIAMOND AND 22K GOLD CELTIC RING

gross weight approximately: 25 grams; size: 7 1/2

US\$800 - 1,200

20

A COLLECTION OF THREE 22K AND 18K GOLD CHARM PENDANTS, INCLUDING CATHY WATERMAN

two diamond set; two with maker's mark for Cathy Waterman; length: 1 to 3/4in.

US\$1,000 - 1,500

21

A CULTURED PEARL AND 20K GOLD NECKLACE

pearls approximately 9.7mm; gross weight approximately: 62 grams; length: 17in.

US\$2,000 - 3,000

22

A PAIR OF DIAMOND, TOURMALINE AND 18K GOLD PENDANT EARRINGS, ATHENA

signed Athena; gross weight approximately: 29 grams; length: 2in.

US\$1,000 - 1,500

23

A TOURMALINE, DIAMOND AND 18K GOLD RING

oval-shaped pink tourmaline weighing: 3.24cts; size: 7

US\$1,800 - 2,500

24

THREE RUBY AND HIGH KARAT GOLD BRACELETS, GURHAN

signed Gurhan, no. BE055, BD432, BC555; gross weight approximately: 40 grams; length: 7in.

US\$2,000 - 3,000



25
A TOURMALINE, DIAMOND AND 18K BI-COLOR GOLD RING

oval-shaped pink tourmaline weighing: 3.53cts; size: 6 1/2

US\$2,000 - 3,000

26
A DIAMOND AND 18K GOLD NECKLACE, JOSE HESS

signed Jose Hess, no. 20243414; estimated total diamond weight: 1.00ct; length 16in.

US\$1,200 - 1,800

27
A PAIR OF DIAMOND, PINK SAPPHIRE AND 22K GOLD EARRINGS, CATHY WATERMAN

signed CW; length: 1 1/2in.

US\$2,000 - 3,000

28
A MULTI-COLORED SAPPHIRE AND HIGH KARAT GOLD NECKLACE AND BRACELET SET, GURHAN

both signed Gurhan, necklace no. NL280, bracelet no. BF488; gross weight approximately: 30 grams; necklace length: 18in.; bracelet length: 7in.

US\$3,000 - 5,000

29
A DIAMOND AND 18K GOLD BRACELET

gross weight approximately: 27 grams; length: 7in.

US\$1,200 - 1,800

30
AN 18K BI-COLOR GOLD OPEN LINK BRACELET

weighing approximately: 92 grams; length: 7 1/2in.

US\$2,000 - 3,000



31

32



33



34

35

36

**31
A PAIR OF GEM-SET AND 18K GOLD EARRINGS**

including sapphires and pink tourmaline cabochons; length: 1 1/2in.

US\$800 - 1,200

**32
AN 18K GOLD NECKLACE, TIFFANY & CO.**

signed Tiffany & Co., Italy; weighing approximately: 54 grams; length: 16in.

US\$2,000 - 3,000

**33
TWO GEM-SET AND 14K GOLD PENDANTS ON 18K GOLD CHAINS**

including tourmaline and aquamarine slices; length: 2 1/4 and 1 1/2in.

US\$1,000 - 1,500

**34
A QUARTZ, DIAMOND AND 18K GOLD EARRING AND RING SET**

estimated total diamond weight: 1.00ct; earring length: 1in.; ring size: 6 1/2

US\$1,000 - 1,500

**35
AN 18K GOLD WOVEN BANGLE BRACELET AND EARRING SET, CARTIER, CIRCA 1990**

signed Cartier; bracelet no. 797495; earrings no. 974761; gross weight approximately: 46 grams; bracelet diameter: 2in.; earring length: 7/8in.

US\$3,000 - 5,000

**36
A GEM-SET AND 18K GOLD BRACELET**

including amethyst, citrine, peridot and blue topaz; gross weight approximately: 30 grams; length: 6 3/4in.

US\$1,000 - 1,500



37



38



38



39



40



**37
A TANZANITE, DIAMOND AND 18K ROSE
GOLD PENDANT NECKLACE**

fancy-shaped tanzanite weighing: 34.20cts;
length: 18in.

US\$1,500 - 2,000

**PROPERTY FROM A PRIVATE
OREGON COLLECTION**

**38
A SUITE OF FRESHWATER CULTURED
PEARL, GEM-SET AND 18K GOLD
JEWELRY**

comprising a necklace, bracelet and pair
of earrings; necklace length: 19in.; bracelet
length: 6 1/2in.; earring length: 1 1/2in.

US\$1,000 - 1,500

PROPERTY OF VARIOUS OWNERS

**39
A MULTI-COLORED SAPPHIRE AND 22K
GOLD 'MOSAIC' BANGLE BRACELET,
RENSTEIN/ROSS**

signed Renstein/Ross, Mosaic Bangle; gross
weight approximately: 36 grams; diameter:
2 3/8in.

US\$3,000 - 5,000

**40
AN 18K BI-COLOR GOLD BANGLE
BRACELET**

weighing approximately: 45 grams; diameter:
2 1/4in.

US\$1,200 - 1,800



41



42



43



44

41

A SAPPHIRE, DIAMOND AND 18K GOLD NECKLACE, CARVIN FRENCH

comprising five strands of sapphire beads, measuring approximately 2.3mm; *with maker's mark; length: 16in.*

US\$2,000 - 3,000

PROPERTY OF A LADY

42

AN AQUAMARINE, DIAMOND, COLORED DIAMOND AND 18K GOLD BROOCH/ PENDANT WITH CHAIN, PETER LINDEMAN

round modified brilliant-cut aquamarine weighing: 23.68cts; *with maker's mark; estimated total diamond weight: 1.00ct; length: 18in. (colored diamonds untested for origin of color)*

US\$5,000 - 7,000

GIJA identification report #1915664, dated December 13, 1982, stating the aquamarine as weighing 23.68 carats.

PROPERTY OF VARIOUS OWNERS

43

A DIAMOND AND 18K GOLD BRACELET

gross weight approximately: 43 grams; length: 6 1/4in.

US\$2,000 - 3,000

44

A CULTURED PEARL, DIAMOND AND 14K GOLD DOUBLE-STRAND NECKLACE

pearls approximately 7.5 to 7.0mm; estimated total diamond weight: 1.15cts; length: 14in.

US\$1,000 - 2,000



45

46

48

49

45
A TOURMALINE, DIAMOND AND 14K GOLD PENDANT AND EARRING SET
 together with an 18k gold chain; pendant length: 2in.; earring length: 1 1/4in.

US\$1,000 - 1,500

46
A BAROQUE CULTURED PEARL, PERIDOT, DIAMOND AND GOLD CLIP-BROOCH
 dimensions: 2 1/4 x 2 1/4in.

US\$1,500 - 2,500

47
A PAIR OF COLORED CULTURED PEARL, COLORED DIAMOND, DIAMOND AND 18K ROSE GOLD SEAHORSE EARRINGS
 pearls approximately 9.6 to 9.4mm; length: 2in. (colored cultured pearls and diamonds untested for origin of color)

US\$1,000 - 1,500

48
A DIAMOND AND 14K GOLD NECKLACE
 estimated total diamond weight: 6.95cts; gross weight approximately: 25 grams; length: 16 3/4in.

US\$2,000 - 3,000

PROPERTY OF VARIOUS OWNERS
 49
A COLLECTION OF FIVE 18K GOLD BANGLE BRACELETS
 gross weight approximately: 97 grams; diameter: 2 1/4in.

US\$3,000 - 5,000



50

51

52

50
A PERIDOT AND 18K GOLD NECKLACE
 comprising six strands of briolette-cut peridot interspersed with polished gold beads;
length: 16in.

US\$4,000 - 6,000

51
A COLORED CULTURED PEARL, COLORED DIAMOND AND 18K GOLD MONKEY PENDANT NECKLACE
 pearl approximately 12.8mm; *estimated total diamond weight: 2.20cts; gross weight approximately: 32 grams; length: 17 1/2in. (colored cultured pearl and diamonds untested for origin of color)*

US\$2,000 - 3,000

52
A COLORED CULTURED PEARL, COLORED DIAMOND AND 18K GOLD FLOWER RING
 pearl approximately 11.2mm; *estimated total diamond weight: 2.35cts; size: 6 3/4 (colored cultured pearl and diamonds untested for origin of color)*

US\$1,500 - 2,500



53
AN EMERALD, RUBY AND GOLD RING
 oval-shaped emerald approximately:
 14.20 x 10.40 x 7.00mm; *gross weight*
 approximately: 32 grams; *size*: 6 1/2

US\$1,000 - 1,500

54
A GOLD COIN AND 18K GOLD CHARM BRACELET
 suspending eight coins including: coins of
 Austria, 1915 4 Ducat Restrike; Poland,
 1925 20 Zlotych; Great Britain, 1906
 Sovereign; Russia, 1850 5 Roubles and
 1903 10 Roubles; France, 1857 50 Francs;
 Netherlands, 1750 14 Gulden; Switzerland,
 1883 20 Francs; *gross weight approximately:*
 147 grams; *length*: 8 1/2in.

US\$4,000 - 6,000

55
**AN ENAMEL, DIAMOND AND 18K GOLD
 DRAGON HEAD FLEXIBLE BRACELET**
gross weight approximately: 107 grams;
length: 7 1/2in. (adjustable)

US\$2,500 - 3,500

56
**A JADEITE JADE AND 18K GOLD
 SADDLE RING**
 saddle jadeite jade cabochon approximately:
 22.06 x 7.89 x 3.01mm; *size*: 6 1/2

US\$1,500 - 2,500
 Mason-Kay report #160926-3, dated
 September 26, 2016, stating: Natural Jadeite
 Jade - No Dye or Polymer Detected - 'A'
 Jade.

57
**AN EMERALD, DIAMOND AND 18K
 GOLD NECKLACE**
estimated total emerald weight: 10.50cts;
length: 53in.

US\$4,000 - 6,000





58
**A CARVED JADE, EMERALD, DIAMOND
 AND GOLD PENDANT/BROOCH**

circular carved and pierced jade
 approximately: 49.0 x 48.0mm; *estimated
 total diamond weight: 1.65cts; diameter: 2
 1/2in.*

US\$1,000 - 1,500

59
**AN EMERALD, RUBY, DIAMOND AND
 14K GOLD BROOCH/RING**

oval emerald cabochon weighing: 9.40cts;
brooch length: 1 1/8in.; ring size: 6 1/2

US\$2,000 - 3,000

60
AN 18K GOLD LINK NECKLACE

*weighing approximately: 82 grams; length:
 16 1/2in.*

US\$2,500 - 3,500

61
**AN EMERALD, DIAMOND, 18K GOLD
 AND PLATINUM RING**

cushion-shaped emerald approximately: 5.90
 x 5.15 x 4.60mm; *size: 6 1/4*

US\$2,000 - 3,000

62
**A PAIR OF DIAMOND, COLORED
 DIAMOND, EMERALD AND 18K BI-
 COLOR GOLD PENDANT EARRINGS**

*estimated total colored diamond weight:
 4.15cts; estimated total colorless diamond
 weight: 3.00cts; length: 2 5/8in. (colored
 diamonds untested for origin of color)*

US\$3,000 - 5,000

63
AN 18K GOLD LINK BRACELET

*weighing approximately: 35 grams; length:
 6 1/2in.*

US\$1,000 - 1,500





64
A COMPOSITE RUBY, DIAMOND, GOLD AND SILVER NECKLACE AND EARRING SET

estimated total diamond weight (excluding rose-cut diamonds): 52.40cts; necklace length: 18in.; earring length: 3 1/8in

US\$5,000 - 8,000

65
A GEM-SET, DIAMOND AND SILVER-TOPPED GOLD BRACELET

estimated total diamond weight: 1.25cts; length: 6 3/4in.

US\$800 - 1,200

66
AN EMERALD, DIAMOND, SILVER AND 18K GOLD RING

oval emerald cabochon approximately: 17.5 x 13.7 x 11.0mm; size: 7

US\$2,000 - 3,000

67
A PAIR OF CARVED RUBY, DIAMOND AND GOLD EARRINGS

oval-shaped carved rubies approximately: 25.50 x 19.40 x 2.10mm; estimated total diamond weight: 1.50cts; length: 2in.

US\$2,000 - 3,000

68
A DIAMOND AND GOLD ETERNITY BAND

estimated total diamond weight: 1.30cts; size 7 1/4

US\$1,000 - 2,000

69
AN EMERALD, DIAMOND, SILVER AND GOLD BANGLE BRACELET

estimated total diamonds weight: 2.00cts (excluding rose-cut diamonds); gross weight: 33 grams; diameter: 2 3/8in.

US\$1,200 - 1,800

70
A PAIR OF DIAMOND, 22K GOLD AND SILVER EARRINGS, CATHY WATERMAN with maker's mark; length: 1 1/4in.

US\$1,000 - 1,500



PROPERTY FROM AM NEW YORK COLLECTOR

71
A COMPOSITE RUBY, DIAMOND, PLATINUM AND 18K GOLD RING
 oval-shaped composite ruby approximately: 17.14 x 13.31 x 8.73mm; triangular-shaped side diamonds weighing: 1.88 and 1.71cts; size: 8 1/2

US\$5,000 - 7,000

AGL report #CS1077206, dated July, 29, 2016, stating the ruby as: heated and heavily treated using a high refractive index lead-glass to fill fractures and cavities.

GIA report #2155692776, dated October 3, 2013, stating the diamond weighing 1.88 carats as: G color, SI1 clarity.

GIA report #11094513, dated October 2, 2013, stating the diamond weighing 1.71 carats as: E color, SI1 clarity.

PROPERTY OF VARIOUS OWNERS

72
A RUBY, DIAMOND AND PLATINUM CLUSTER RING
estimated total diamond weight: 1.80cts; size: 8

US\$1,800 - 2,500

73
A COMPOSITE RUBY, DIAMOND AND WHITE GOLD NECKLACE
estimated total diamond weight: 7.00cts; length: 16 1/2 in.

US\$3,000 - 5,000

PROPERTY FROM A PRIVATE OREGON COLLECTION

74
A PAIR OF DIAMOND, COLORED DIAMOND, PLATINUM AND GOLD EARRINGS
two triangular-shaped diamonds weighing a total of approximately: 3.00cts; estimated remaining diamond weight: 5.00cts; length: 2 in. (colored diamonds untested for origin of color)

US\$5,000 - 7,000

PROPERTY OF VARIOUS OWNERS

75
A DIAMOND AND PLATINUM FLEXIBLE RING, TIFFANY & CO.
signed Tiffany & Co, with signed pouch; estimated total diamond weight: 4.30cts; size 7 1/2

US\$3,000 - 5,000



77



78



79



81



80



82

76
A MULTI-COLORED SAPPHIRE AND PLATINUM LINE BRACELET
estimated total sapphire weight: 7.00cts; length: 7in.
US\$1,000 - 1,500

77
A RUBY BEAD AND 18K GOLD NECKLACE, CARVIN FRENCH
comprising seven strands of graduated faceted ruby beads, weighing approximately: 260.00cts; with maker's mark; shortest strand length: 17in.
US\$5,000 - 7,000

78
A PAIR OF RUBY, DIAMOND AND PLATINUM EARRINGS, CATHY WATERMAN
with maker's mark; length: 2 1/8in.
US\$1,000 - 1,500

PROPERTY OF A FLORIDA PRIVATE COLLECTOR
 79
A DIAMOND AND 18K WHITE GOLD WRISTWATCH, RIALTO
quartz; deployant clasp; case signed, no. 12466; estimated total diamond weight: 1.00ct; gross weight approximately: 85 grams; length: 6 1/2in.

US\$2,000 - 3,000
PROPERTY OF VARIOUS OWNERS

80
A DIAMOND AND 18K WHITE GOLD RING, PASQUALE BRUNI
signed Pasquale Bruni; estimated total diamond weight: 2.75cts; size: 6 3/4
US\$1,000 - 1,500

81
A GARNET, DIAMOND AND 18K WHITE GOLD RING
cushion-shaped garnet: 13.15 x 10.80 x 8.25mm; estimated total diamond weight: 1.00ct; size: 5 1/2
US\$1,200 - 1,800

82
AN AMETHYST, RUBY, DIAMOND AND 14K BI-COLOR GOLD RING
estimated total diamond weight: 6.00cts; size: 7
US\$1,000 - 1,500



83



85



84



86



87

83
**A DIAMOND AND 18K WHITE GOLD
'B.ZERO 1' RING, BVLGARI**
*signed Bulgari; with signed box; estimated
total diamond weight: 1.00ct; size: 6 1/2*

US\$3,000 - 5,000

84
**A PAIR OF RUBY, DIAMOND AND
BLACKENED 18K GOLD EARRINGS**
set with ruby briolettes; length: 2in.

US\$1,200 - 1,800

85
**A PINK SAPPHIRE, DIAMOND,
PLATINUM AND GOLD RING**
*circular-cut pink sapphire approximately:
7.00 x 7.00 x 3.85mm; size: 6 1/2*

US\$1,000 - 1,500

**PROPERTY SOLD BY A PRIVATE
CHARITABLE FOUNDATION**

86
**A BAROQUE CULTURED PEARL,
DIAMOND AND SILVER NECKLACE**
length: 30 1/2in.

US\$3,000 - 5,000

PROPERTY OF VARIOUS OWNERS

87
**A KUNZITE, PINK SAPPHIRE, DIAMOND
AND 18K WHITE GOLD RING**
*oval-shaped kunzite weighing: 23.05cts; size
7 1/4*

US\$2,500 - 3,500

88
**A PAIR OF DIAMOND AND 18K WHITE
GOLD HOOP EARRINGS**
*estimated total diamond weight: 7.85cts;
length 1 1/2 in.*

US\$4,500 - 5,500



PROPERTY OF A FLORIDA PRIVATE COLLECTOR

89
A DIAMOND AND 18K WHITE GOLD PENDANT WITH CHAIN
estimated total diamond weight: 3.25cts; length: 18in.

US\$1,500 - 2,500

PROPERTY OF VARIOUS OWNERS

90
A PAIR OF SOUTH SEA CULTURED PEARL, DIAMOND AND 18K WHITE GOLD EARRINGS
pearls approximately 15.0 to 14.7mm; length: 7/8in.

US\$3,000 - 5,000

91
A DIAMOND AND 18K WHITE GOLD INTEGRAL BRACELET WRISTWATCH, LONGINES

manual movement; dial signed Longines; gross weight approximately: 68 grams; length: 8in.

US\$2,000 - 3,000

PROPERTY FROM AM NEW YORK COLLECTOR

92
AN 18K WHITE GOLD 'DOUBLE C' BAND, CARTIER, 2000
signed Cartier, 2000, no. N81539; size: 10 1/4

US\$800 - 1,200

PROPERTY OF VARIOUS OWNERS

93
A RUBY, DIAMOND AND 14K WHITE GOLD HEART RING, SONIA B
signed Sonia B.; size 8

US\$800 - 1,200

PROPERTY SOLD BY A PRIVATE CHARITABLE FOUNDATION

94
A DIAMOND AND PLATINUM RING
round brilliant-cut center diamond approximately: 1.50cts; size: 6 1/4

US\$4,000 - 6,000



95



96



97



99



98



100

PROPERTY OF VARIOUS OWNERS

95

AN ANTIQUE DIAMOND, PEARL AND PLATINUM-TOPPED GOLD NECKLACE, CIRCA 1900

pearl approximately 7.25 x 6.70 x 5.60 mm; estimated total diamond weight: 1.40cts; length: 17in. (pearl untested for origin)

US\$2,000 - 3,000

96

A PAIR OF DIAMOND, EMERALD AND PLATINUM EAR CLIPS

estimated total diamond weight: 6.50cts; dimensions: 1 x 3/4in.

US\$4,000 - 6,000

97

AN ART DECO DIAMOND AND PLATINUM LINE BRACELET

estimated total diamond weight: 7.00cts; length: 6 3/4 in.

US\$5,000 - 7,000

98

AN ART DECO DIAMOND AND PLATINUM RING

no. 2749; estimated total diamond weight: 2.05cts; size: 7

US\$1,500 - 2,500

99

A SAPPHIRE, DIAMOND AND 18K WHITE GOLD RING

oval-shaped sapphire weighing: 1.41cts; size: 6 3/4

US\$800 - 1,200

100

A DIAMOND AND PLATINUM CLIP BROOCH

estimated total diamond weight: 6.00cts; length: 2in.

US\$3,000 - 5,000

101

A DIAMOND AND PLATINUM SWORD BROOCH

estimated total diamond weight: 2.15cts; length: 2in.

US\$2,000 - 3,000



101



102



103



104



106



105



107

102
**A CARVED JADEITE JADE, DIAMOND
AND PLATINUM RING**

jadeite jade cabochon approximately: 12.05 x 16.75 x 4.40mm; *estimated total diamond weight: 1.00ct; size: 6 1/2*

US\$3,000 - 5,000

Mason Kay report #150507-1, dated May 7, 2015, stating: Natural Jadeite Jade, No Dye or Polymer Detected - "A" Jade

103
**A DIAMOND AND PLATINUM WATCH
RING, TIFFANY & CO.**

17j; *dial signed Tiffany & Co.; movement signed J. Schulz, case no. 13976, AW; estimated total diamond weight: 1.00ct; size: 6*

US\$2,000 - 3,000

104
**A DIAMOND AND PLATINUM CIRCLE
BROOCH**

old mine-cut center diamond approximately: 1.05cts, estimated total remaining diamond weight: 3.45cts; diameter: 1 1/2in.

US\$1,500 - 2,500

105
**A SAPPHIRE, DIAMOND AND 18K WHITE
GOLD RING**

oval sapphire cabochon weighing: 4.80cts; size: 7 1/2

US\$1,200 - 1,800

106
AN UNMOUNTED DIAMOND
old European-cut diamond weighing: 1.27cts

US\$2,000 - 3,000

107
**A DIAMOND, GREEN STONE AND
PLATINUM PENDANT ON A PLATINUM
CHAIN**

estimated total diamond weight: 2.20cts; length: 30in.

US\$5,000 - 7,000



PROPERTY SOLD BY A PRIVATE CHARITABLE FOUNDATION

108
A PAIR OF DIAMOND AND PLATINUM EAR CLIPS
estimated total diamond weight: 5.40cts; length: 1in.

US\$1,000 - 1,500

PROPERTY OF VARIOUS OWNERS

109
A DIAMOND, SYNTHETIC EMERALD AND PLATINUM BRACELET
estimated total diamond weight: 16.00cts; gross weight approximately: 58 grams; length 7in.

US\$3,000 - 5,000

110
A DIAMOND AND PLATINUM RING
old European-cut center diamond approximately; 1.25cts; estimated remaining diamond weight: 1.90cts; size: 10 1/4

US\$4,000 - 6,000

111
A PAIR OF DIAMOND, SYNTHETIC EMERALD AND PLATINUM EARRINGS
estimated total diamond weight: 9.00cts; gross weight approximately: 52 grams; length: 2in.

US\$2,000 - 3,000

112
A PAIR OF CARVED EMERALD, DIAMOND AND WHITE GOLD EARRINGS
each suspending a carved hexagonal emerald tablet with a baguette-cut diamond surround and surmount; estimated total diamond weight: 4.00cts; length: 2in.

US\$7,000 - 9,000

113
A DIAMOND AND PLATINUM BROOCH, FRENCH
with French assay marks; estimated total diamond weight: 10.80cts; length: 3in.

US\$6,000 - 8,000

114
A THREE-STRAND CULTURED PEARL AND SILVER NECKLACE AND BRACELET SET, MIKIMOTO
pearls approximately 6.6 to 6.3mm; both with maker's mark and signed box; necklace length: 14in.; bracelet length: 7in.

US\$2,000 - 3,000

PROPERTY FROM A PRIVATE OREGON COLLECTION

115
A DIAMOND, JADEITE JADE, GREEN GLASS AND PLATINUM BRACELET
estimated total diamond weight: 3.00cts; length: 6 1/2in.

US\$2,000 - 3,000

PROPERTY OF VARIOUS OWNERS

116
AN ART DECO DIAMOND AND PLATINUM RING
old European-cut center diamond approximately: 0.95ct; size: 3 1/2

US\$1,000 - 2,000



112



113



114



116



115



117



118



120



119

117
A DIAMOND, SAPPHIRE AND 18K WHITE GOLD 'FISHBONE' PENDANT AND EARRING SET
 pendant suspended from a diamond-set chain; *estimated total diamond weight: 2.25cts; necklace length: 18in.; earring length: 1 1/4in., earring length: 1 1/8in.*
US\$1,500 - 2,000

118
A CHALCEDONY, CHRYSOPRASE AND BLACK ONYX BEAD NECKLACE, CARVIN FRENCH
 clasp mounted in 18k white gold; *with maker's mark; length: 23in.*
US\$3,000 - 5,000

119
A SAPPHIRE, DIAMOND AND PLATINUM RING
 oval-shaped sapphire weighing: 9.61cts; *estimated total diamond weight: 1.05cts; size: 6 1/2*
US\$3,500 - 5,000

120
A PAIR OF CARVED JADEITE JADE, DIAMOND, PLATINUM AND GOLD PENDANT EARRINGS
 carved jadeite jade drop approximately: 44.80 x 14.38 x 3.36mm; *length: 2 1/4in.*
US\$1,000 - 1,500

Mason-Kay report #160930-1, dated September 30, 2016, stating: Natural Jadeite Jade - No Dye or Polymer Detected - 'A' Jade.



121

122

123

126

124

125

121

A DIAMOND AND PLATINUM LONG CHAIN NECKLACE

estimated total diamond weight: 7.50cts; length: 60in.

US\$7,000 - 9,000

PROPERTY FROM A PRIVATE OREGON COLLECTION

122

A JADEITE JADE, DIAMOND AND GOLD RING

oval jadeite jade cabochon approximately: 13.44 x 8.17 x 2.70mm; estimated total diamond weight: 1.80cts; size: 7 1/2

US\$1,500 - 2,500

PROPERTY OF VARIOUS OWNERS

123

AN INLAID OPAL, DIAMOND AND GOLD BROOCH

depicting a lighthouse; diameter: 1 1/2in.

US\$1,000 - 1,500

PROPERTY SOLD BY A PRIVATE CHARITABLE FOUNDATION

124

A CARVED ROCK CRYSTAL, SAPPHIRE, DIAMOND AND 14K GOLD BROOCH AND EARRING SET, TIFFANY & CO.

signed Tiffany; brooch length: 1 3/8in.; earring length: 1in.

US\$1,500 - 2,500

PROPERTY OF VARIOUS OWNERS

125

A SAPPHIRE, DIAMOND AND PLATINUM RING

oval-shaped sapphire approximately: 9.25 x 8.70 x 5.78mm; estimated total diamond weight: 1.90cts; size 6 1/4

US\$5,000 - 7,000

126

A TOURMALINE, DIAMOND AND 18K WHITE GOLD RING

size: 6 1/2

US\$1,200 - 1,800



127



128



129



130



131

127

A SAPPHIRE, DIAMOND AND 18K WHITE GOLD BROOCH

no. 1V611-1; estimated total diamond weight: 1.10cts; length: 2 1/2in.

US\$3,000 - 5,000

128

A DIAMOND AND 18K WHITE GOLD 'ALHAMBRA' RING, VAN CLEEF & ARPELS, FRENCH

signed VCA, no. B5960 D174; with French assay mark; size: 4

US\$2,000 - 3,000

129

A DIAMOND, SAPPHIRE AND 18K WHITE GOLD 'MIMI STAR' RING, CARTIER, FRENCH

signed Cartier, reference 30447B; with French assay and makers marks; size 6

US\$3,000 - 5,000

130

A COMPOSITE TURQUOISE, COMPOSITE SAPPHIRE, DIAMOND AND 18K WHITE GOLD NECKLACE, ANDREOLI

signed Andreoli; estimated total diamond weight: 3.50cts; length 19 1/2 in.

US\$2,500 - 3,500



131
A PAIR OF DIAMOND AND 18K WHITE GOLD HOOP EARRINGS
estimated total diamond weight: 5.70cts.; length: 1 3/4in.

US\$1,800 - 2,500

132
A PAIR OF SOUTH SEA CULTURED PEARL, DIAMOND AND PLATINUM EAR PENDANTS
pearls approximately 13.0 x 11.7mm and 13.5 x 11.4mm; estimated total diamond weight: 3.00cts; length: 1 1/2in.

US\$1,200 - 1,800

133
A SAPPHIRE, DIAMOND AND 18K WHITE GOLD PENDANT WITH CHAIN
circular-cut sapphire approximately: 8.90 x 8.85 x 4.30mm; length: 16in.

US\$1,800 - 2,500

134^Y
A CARVED ROCK CRYSTAL, MOTHER-OF-PEARL, SAPPHIRE, AQUAMARINE, DIAMOND AND 18K GOLD FLOWER CLIP-BROOCH, SEAMAN SCHEPPS
signed Seaman Schepps, no. 18214; length: 2in.

US\$3,000 - 5,000

135
AN AQUAMARINE, DIAMOND AND PLATINUM RING
rectangular step-cut aquamarine approximately: 12.50 x 9.00mm; estimated total diamond weight: 1.60cts; size: 8 1/2

US\$1,000 - 1,500

136
AN UNMOUNTED STAR SAPPHIRE
oval star sapphire double cabochon weighing: 21.85cts

US\$6,000 - 8,000

GIA report #2171608288, dated May 25, 2016, stating: no indications of heating.

137
A DIAMOND AND 18K WHITE GOLD BRACELET
estimated total diamond weight: 6.30cts; gross weight approximately: 53 grams; length: 7in.

US\$4,000 - 6,000

138
A DIAMOND AND PLATINUM SOLITAIRE RING, A. JAFFE
ideal round brilliant-cut diamond weighing: 1.28cts; signed A. Jaffe, Shreve, Crump & Low; with signed box; size: 6 1/2

US\$4,500 - 5,500

AGS report #006940307, dated February 23, 2006, stating the diamond as: G color, VS2 clarity.



140



141



143



139



142



144

139

A SAPPHIRE, DIAMOND AND WHITE GOLD RING

oval-shaped sapphire approximately: 9.9 x 7.8 x 5.35mm; estimated total diamond weight: 1.00ct; size: 8 (with sizer)

US\$3,000 - 5,000

140

A COLORED BAROQUE CULTURED PEARL, DIAMOND, SILVER AND GOLD NECKLACE

pearls approximately 10.5 to 9.1mm; estimated total diamond weight: 2.90cts; length: 20in. (colored cultured pearls untested for origin of color)

US\$1,000 - 1,500

141

A SAPPHIRE, DIAMOND AND PLATINUM RING

cushion-shaped center sapphire approximately 9.41 x 7.93 x 3.21mm; size: 6 1/2

US\$5,000 - 7,000

AGL report #CS 1078588, dated September 29, 2016, stating the sapphires as: Cambodian origin, no evidence of heat.

142

A DIAMOND AND 18K WHITE GOLD PAVÉ BAND

estimated total diamond weight: 2.40cts; size: 7 1/2

US\$1,200 - 1,800

143

A PAIR OF DIAMOND AND 18K WHITE GOLD HOOP EARRINGS

estimated total diamond weight: 6.40cts; diameter: 2in.

US\$1,800 - 2,500

144

A TURQUOISE, DIAMOND, SAPPHIRE, RESIN AND SILVER BANGLE BRACELET

estimated total diamond weight: 1.00ct; diameter: 2 3/8in.

US\$1,000 - 1,500



145



147



146



148

145
A PAIR OF SAPPHIRE, DIAMOND AND 14K WHITE GOLD PENDANT EARRINGS
estimated total diamond weight: 3.25cts; length: 2 1/4in.

US\$2,000 - 3,000

146
A SAPPHIRE, DIAMOND AND PLATINUM RING
oval-shaped sapphire approximately 11.40 x 6.20 x 2.12mm; estimated total diamond weight: 1.40cts; size 6 3/4

US\$1,000 - 1,500

147
A SAPPHIRE, DIAMOND AND OXIDIZED SILVER BANGLE BRACELET
estimated total diamond weight: 12.00cts; diameter: 2 1/4in.

US\$3,000 - 5,000

148
A DYED TURQUOISE, SAPPHIRE, DIAMOND AND WHITE GOLD NECKLACE
estimated total diamond weight: 3.00cts; length 19in. (adjustable)

US\$3,000 - 5,000



149
A PAIR OF DIAMOND AND 18K WHITE GOLD SOLITAIRE EARRINGS

estimated total diamond weight: 1.45cts; diameter: 1/4in.

US\$3,000 - 5,000

150
A PAIR OF SOUTH SEA CULTURED PEARL, DIAMOND AND WHITE GOLD EARRINGS

pearls approximately 8.5mm; length 1 1/4in.

US\$800 - 1,200

151
A DIAMOND AND WHITE GOLD RING

round brilliant-cut center diamond approximately 1.05cts; size: 8

US\$3,000 - 5,000

152
AN AQUAMARINE, TOURMALINE, DIAMOND AND 18K WHITE GOLD NECKLACE

estimated total diamond weight: 1.25cts; gross weight approximately: 105 grams; length: 16in.

US\$3,000 - 5,000

153
A DIAMOND AND PLATINUM RING SET

comprising a solitaire ring and inset band; round brilliant-cut center diamond approximately: 1.00ct; size: 5 1/2

US\$3,000 - 5,000

154
A PAIR OF AQUAMARINE, DIAMOND, PLATINUM AND WHITE GOLD DAY/ NIGHT EARRINGS

briolette aquamarines approximately: 28.0 x 13.8mm ; estimated total diamond weight: 1.90cts; length: 3in.

US\$1,000 - 1,500



153

154

157

158

155

156

159

155

A PINK SAPPHIRE, DIAMOND AND PLATINUM RING

oval-shaped light pink sapphire weighing: 4.07cts; *estimated total diamond weight: 1.10cts; size: 6*

US\$3,000 - 5,000

GIA report #14793423, dated December 13, 2005, stating: Natural Light Pink Sapphire, No Evidence of Heat Treatment.

156

A CULTURED PEARL, DIAMOND AND 18K WHITE GOLD NECKLACE

pearls approximately 9.0 to 8.9mm; *length: 18in.*

US\$1,200 - 1,800

157

A PAIR OF DIAMOND AND PLATINUM STUD EARRINGS

each centering a triangular-shaped diamond; *estimated total diamond weight: 1.10cts; length: 1/2in.*

US\$1,200 - 1,800

158

AN UNMOUNTED DIAMOND

round brilliant-cut diamond weighing: 2.02cts

US\$8,000 - 10,000

GIA report #1172871093, dated September 17, 2016, stating the diamond as: H color, SI2 clarity.

159

AN AQUAMARINE, DIAMOND AND 18K WHITE GOLD RING

marquise-shaped aquamarine weighing: 2.24cts; *size: 7*

US\$1,200 - 1,800



162

160

161

163

164

160

A DIAMOND AND PLATINUM THREE-STONE RING

round brilliant-cut center diamond approximately: 1.00ct; estimated remaining diamond weight: 1.40cts; size: 9

US\$1,000 - 1,500

PROPERTY SOLD BY A PRIVATE CHARITABLE FOUNDATION

161

A FRACTURE FILLED DIAMOND AND PLATINUM SOLITAIRE RING

pear-shaped fracture filled diamond approximately: 1.50cts; size: 4 1/2

US\$1,500 - 2,500

PROPERTY OF VARIOUS OWNERS

162

A DIAMOND AND PLATINUM BRACELET

estimated total diamond weight: 12.00cts; gross weight approximately: 41 grams; length: 7 1/2in.

US\$5,500 - 7,500

163

A PAIR OF CULTURED PEARL, DIAMOND AND 18K WHITE GOLD TASSEL EARRINGS

pearls approximately: 2.5mm; length: 3 1/2in.

US\$1,500 - 2,500

164

A DIAMOND AND PLATINUM BAND

estimated total diamond weight: 0.90ct; size: 6

US\$800 - 1,000

165

A PAIR OF DIAMOND, CULTURED PEARL AND PLATINUM EAR CLIPS, CARVIN FRENCH

pearls approximately 11.5 and 11.0mm with maker's mark; estimated total diamond weight: 3.65cts; length: 1 3/8in.

US\$2,000 - 3,000

166

A PAIR OF DIAMOND AND PLATINUM 'PAGODA' EARRINGS, TIFFANY & CO.

signed Tiffany & Co., with signed box; estimated total diamond weight: 1.90cts; length: 1 3/4in.

US\$5,000 - 7,000

167^Y

A CORAL, DIAMOND AND 18K WHITE GOLD NECKLACE

estimated total diamond weight: 29.00cts; length: 16in.

US\$12,000 - 18,000



165

167

166



168



169



170



171



173



172

168
**A PAIR OF DIAMOND, COLORED
DIAMOND AND 18K TRI-COLOR GOLD
PENDANT EARRINGS**

*estimated total diamond weight: 16.20cts;
gross weight approximately: 29 grams;
length 2 1/4in. (colored diamonds untested
for origin of color)*

US\$1,000 - 1,500

169
**A DIAMOND AND 18K WHITE GOLD
'HAPPY DIAMONDS' PENDANT
NECKLACE, CHOPARD**

*signed Chopard, no. 6196443 797219-1001;
length: 16in.*

US\$1,800 - 2,500

170
**A YELLOW SAPPHIRE, DIAMOND AND
18K WHITE GOLD RING**

*cushion-shaped yellow sapphire weighing:
4.50cts; estimated total diamond weight:
1.85cts; size: 6 1/4*

US\$4,500 - 5,500

*AGL report #100998-D, dated May 23,
2007, stating: Natural Fancy Sapphire, No
Enhancement.*

171
**A MULTI-COLORED DIAMOND AND 18K
WHITE GOLD LINE BRACELET**

*estimated total diamond weight: 3.90cts;
length: 7in. (colored diamonds untested for
origin of color)*

US\$1,000 - 1,500

172
**A DIAMOND AND 18K WHITE GOLD
'DOUBLE C' BAND, CARTIER**

signed Cartier, no. NH6888; size 5 3/4

US\$2,000 - 3,000

173
**A 'PARAIBA'-TYPE TOURMALINE,
DIAMOND AND 18K WHITE GOLD RING**

*cushion-shaped tourmaline weighing:
17.94cts; estimated total diamond weight:
3.65cts; size 6 1/2 (with ring sizer)*

US\$1,000 - 1,500

*Copy of GIA report #1146838767, dated
August 6, 2012, stating the tourmaline as:
copper and manganese bearing.*



174

175

178

177

176

179

174
A PAIR OF DIAMOND AND 14K GOLD HOOP EARRINGS
estimated total diamond weight: 2.50cts; length: 1in.

US\$800 - 1,200

175
A PAIR OF YELLOW SAPPHIRE, DIAMOND AND 18K BI-COLOR GOLD EARRINGS
estimated total diamond weight: 2.10cts; estimated total yellow sapphire weight: 1.60cts; length: 1 1/8in.

US\$1,200 - 1,800

176
A DIAMOND AND 18K WHITE GOLD CUFF BANGLE
of heart motif; estimated total diamond weight: 1.00ct; gross weight approximately: 32 grams; diameter 2 1/4in.

US\$2,000 - 3,000

177
A MULTI-COLORED SAPPHIRE, DIAMOND AND 18K WHITE GOLD NECKLACE
estimated total sapphire weight: 10.90cts; estimated total diamond weight: 1.00ct; gross weight approximately: 30 grams; length: 16 1/2in.

US\$2,000 - 3,000

PROPERTY SOLD BY A PRIVATE CHARITABLE FOUNDATION

178
TWO DIAMOND ETERNITY BANDS
one set with baguette-cut diamonds, mounted in platinum; the other set with round brilliant-cut diamonds, mounted in white gold; estimated total diamond weight: 3.20cts; sizes: 7 1/2 and 6

US\$1,200 - 1,800

PROPERTY OF VARIOUS OWNERS

179
A PERIDOT, DIAMOND AND PLATINUM RING
cushion-shaped peridot approximately: 13.80 x 12.50 x 8.90mm; size: 5 1/2 (with sizer)

US\$2,500 - 3,500



180

180
A COLORED CULTURED PEARL, DIAMOND AND GOLD NECKLACE
 pearls approximately 10.4 to 8.7mm; length: 17 1/2in. (colored cultured pearls untested for origin of color)

US\$1,000 - 1,500

181

181
A PAIR OF FANCY COLORED DIAMOND, DIAMOND AND ROSE GOLD PENDANT EARRINGS
 pear brilliant-cut fancy colored diamonds weighing: 1.01 and 0.86ct; estimated remaining diamond weight: 2.10cts; length: 1 3/4in.

US\$2,500 - 3,500

182

182
AN AMETHYST, DIAMOND AND 18K GOLD RING, BARRY KRONEN
 cushion-shaped amethyst approximately 21.70 x 12.20mm; signed B. Kronen; size: 6

US\$1,000 - 1,500

185

183
A CULTURED PEARL, DIAMOND AND GOLD BRACELET
 pearls approximately 7.3 to 7.0mm; estimated total diamond weight: 1.50cts; length: 8in.

US\$1,000 - 2,000

184
A DIAMOND AND 18K ROSE GOLD ETERNITY BAND
 estimated total diamond weight: 5.55cts; size: 6 1/2

US\$2,000 - 3,000

186



187



188



191



189

189



190

185
A PAIR OF AMETHYST, DIAMOND AND 18K ROSE GOLD EARRINGS, ZOCCAI, ITALIAN

signed Zoccai; length: 7/8in.

US\$1,000 - 1,500

186
A COLORED DIAMOND, DIAMOND AND 18K BI-COLOR GOLD CROSS PENDANT

estimated total diamond weight: 2.30cts; dimensions: 3 1/2 x 1 3/4in. (colored diamonds untested for origin of color)

US\$1,500 - 2,000

187
A PAIR OF DIAMOND AND 18K BI-COLOR GOLD PENDANT EARRINGS

estimated total diamond weight: 5.20cts; gross weight approximately: 31 grams; length: 2 3/4in.

US\$1,000 - 1,500

188
A PAIR OF AMETHYST, DIAMOND, PLATINUM AND 18K WHITE GOLD PENDANT EARRINGS, ERICA COURTNEY

18k white gold hoops with detachable platinum pendants; signed EC, with signed box; estimated total diamond weight: 1.25cts; length: 2 1/8in.

US\$1,200 - 1,800

189
A MORGANITE, DIAMOND, COLORED DIAMOND AND 18K WHITE GOLD CROSS PENDANT ON A PINK SAPPHIRE AND 18K WHITE GOLD CHAIN

together with a pair of diamond and 18k white gold earrings; oval-shaped morganite weighing: 1.15cts; estimated total diamond weight: 2.15cts; length: 20 1/4in. (colored diamonds untested for origin of color)

US\$1,000 - 1,500

190
A KUNZITE, DIAMOND AND 18K WHITE GOLD RING

cushion-shaped kunzite weighing: 21.92cts; size: 7

US\$1,000 - 1,500

191
A TOPAZ, DIAMOND AND 18K GOLD RING

size: 5 3/4

US\$800 - 1,200



192

192

AN AMETHYST, DIAMOND AND SILVER NECKLACE AND EARRING SET

estimated total diamond weight (excluding tablet-cut diamonds): 12.00cts; necklace length: 20in.; earring length: 2 7/8in.

US\$4,000 - 6,000

193

AN AMETHYST, TSAVORITE GARNET, DIAMOND AND 18K WHITE GOLD RING

oval-shaped amethyst approximately: 14.41 x 12.54 x 9.02mm; size 6 3/4

US\$1,000 - 1,500

194

A PAIR OF TSAVORITE GARNET, DIAMOND AND PLATINUM EARRINGS, CATHY WATERMAN

with makers mark; length: 1 1/2in.

US\$2,000 - 3,000



PROPERTY FROM A PRIVATE OREGON COLLECTION

195
AN 18K BI-COLOR GOLD AND ENAMEL WOODPECKER BROOCH, LONDON, 1978
signed EW & Co., with English hallmarks, London, 1978; dimensions: 1 7/8 x 1 1/2in.

US\$900 - 1,200

196
AN ENAMEL, DIAMOND, GARNET AND GOLD FOLIATE BROOCH
estimated total diamond weight: 5.00cts; gross weight approximately: 29 grams; dimensions: 2 3/4 x 2in.

US\$3,000 - 5,000

197
AN AMETHYST AND 18K GOLD PENDANT
cushion-shaped amethyst approximately: 31.4 x 30.0 x 20.7mm; length: 1 1/2in.

US\$400 - 600

198
A PINK TOURMALINE, DIAMOND AND YELLOW GOLD BRACELET
together with an unmounted cushion-shaped pink topaz weighing 9.07cts; cushion-shaped tourmaline approximately: 13.50 x 6.90mm; length: 7in.

US\$2,000 - 3,000

199
AN UNMOUNTED COLORED DIAMOND
octagonal-shaped pink diamond weighing: 0.97ct (colored diamond untested for origin of color)

US\$3,000 - 5,000



200



202



201



203

204

205



206



207



208

PROPERTY OF VARIOUS OWNERS

200

A DIAMOND, ENAMEL AND 14K GOLD COVERED DIAL BRACELET WRISTWATCH

17j, unadjusted; dial signed Geneve; movement signed Pesag Watch Co.; estimated total diamond weight: 2.85cts; gross weight approximately: 84 grams; length: 7in.

US\$2,000 - 3,000

201

AN ENAMEL, DIAMOND AND 18K GOLD PAINTED PORTRAIT BROOCH/PENDANT

signed Plojoux, Genève, no. 38544; diameter: 1 1/8in.

US\$800 - 1,200

202

AN ENAMEL, SEED PEARL, DIAMOND AND GOLD BANGLE BRACELET

gross weight approximately: 49 grams; diameter: 2 3/8in. (seed pearls untested for origin)

US\$2,000 - 3,000

Provenance

Property formerly from the Estate of Helen Frankenthaler

203^Y

A COLLECTION OF WHITE CORAL, GOLD AND SILVER JEWELRY

comprising a graduated coral bead necklace, a four-strand bracelet and a pair of ear clips; necklace length: 22in.; bracelet length: 8in.; earring length: 1/2in.

US\$1,000 - 1,500

204

A DIAMOND AND 18K GOLD BRACELET

estimated total diamond weight: 8.00cts; gross weight approximately: 28 grams; length: 6 1/2in.

US\$6,500 - 7,500

205

AN ETRUSCAN REVIVAL 18K GOLD AND GEM-SET BANGLE BRACELET, FRENCH

with French assay marks; weighing approximately: 44 grams; diameter: 2 1/2in.

US\$6,000 - 8,000

206

AN ANTIQUE 18K GOLD CIGARETTE CASE, FRENCH

signed LT, with French assay marks; weighing approximately: 80 grams; dimensions: 3 1/4 x 2in.

US\$2,000 - 3,000

PROPERTY FROM A PRIVATE OREGON COLLECTION

207

A HARDSTONE CAMEO AND 14K GOLD PENDANT WITH CHAIN

gross weight approximately: 37 grams; pendant length: 2 1/4in.; chain length: 20in.

US\$1,000 - 1,500

208

A HARDSTONE AND SHELL CAMEO AND 14K GOLD BRACELET

gross weight approximately: 54 grams; length: 7in.

US\$2,000 - 3,000



209



210



211



212



209

A PAIR OF RUBY, DIAMOND AND PLATINUM EAR CLIPS, DRAYSON

signed Drayson; estimated total diamond weight: 2.00cts; length: 1 1/4in.

US\$2,500 - 3,500

PROPERTY OF VARIOUS OWNERS

210

A RETRO RUBY, DIAMOND AND ROSE GOLD RING

size: 7 1/2

US\$1,000 - 1,500

211

A RETRO 14K BI-COLOR GOLD BRACELET, TIFFANY & CO., CIRCA 1940

signed Tiffany & Co; weighing approximately: 59 grams; length: 7in.

US\$1,000 - 1,500

212

A COLLECTION OF FOUR RETRO 14K BI-COLOR GOLD BROOCHES, MOSSALONE, CIRCA 1940

all signed M.C. Mossalone; gross weight approximately: 54 grams; length: 3 1/2 to 2in.

US\$1,200 - 1,800



213

214

215

212

213
**A RETRO 14K BI-COLOR GOLD
 BRACELET, TIFFANY & CO., CIRCA 1940**
*signed Tiffany & Co.; weighing approximately:
 67 grams; length: 7 1/4in.*

US\$3,000 - 5,000

**PROPERTY FROM A PRIVATE
 OREGON COLLECTION**

214
**A PAIR OF DIAMOND AND 18K GOLD
 EAR CLIPS**
*estimated total diamond weight: 4.50cts;
 length: 1/2in.*

US\$1,500 - 2,500

PROPERTY OF VARIOUS OWNERS

215
**A CITRINE AND 18K GOLD RING,
 CARVIN FRENCH**
*rectangular step-cut citrine approximately:
 25.50 x 18.65 x 11.25mm; with maker's
 mark; size: 7*

US\$1,000 - 1,500



216



217



218



220



221



219

216
A DIAMOND AND GOLD PINEAPPLE BROOCH, ANGELA CUMMINGS FOR TIFFANY & CO., FRENCH
signed Tiffany & Co., France; with signed box; gross weight approximately: 32 grams; length 2 7/8in.

US\$2,000 - 3,000

217
A PAIR OF TURQUOISE, DIAMOND, 18K GOLD AND PLATINUM EAR CLIPS, SCHLUMBERGER FOR TIFFANY & CO.
signed Schlumberger Studios, Tiffany & Co.; length 1in.

US\$4,000 - 6,000

218
A DIAMOND AND 18K GOLD BRACELET, CARTIER
signed Cartier Inc., Swiss, no. 4254; estimated total diamond weight: 3.35cts; gross weight approximately: 44 grams; length 7in.

US\$3,000 - 5,000

219
A DIAMOND AND 18K GOLD RING, VAN CLEEF & ARPELS
signed VCA, no. NY 5K71655; with French assay marks; estimated total diamond weight: 1.05cts; size: 5

US\$2,000 - 3,000

220
A DIAMOND AND BI-COLOR GOLD RING
old mine-cut center diamond approximately: 0.95ct; estimated remaining diamond weight: 2.25ts; size: 5 1/2 (with ring sizer)

US\$4,000 - 6,000

221
A DIAMOND AND 18K GOLD GARDENIA BROOCH
the diamonds set en tremblant; estimated total diamond weight: 1.10cts; gross weight approximately: 28 grams; diameter 1 3/4in.

US\$1,000 - 1,500



222

222
A CULTURED PEARL, DIAMOND AND 18K GOLD TORSADE NECKLACE, CARVIN FRENCH
comprising sixteen strands of cultured pearls measuring approximately 3.2mm; with maker's mark; estimated total diamond weight: 1.75cts; length: 18in.

US\$1,800 - 2,500



223

223
A PAIR OF DIAMOND AND 18K BI-COLOR GOLD EARRINGS
estimated total diamond weight: 1.50cts; gross weight approximately: 30 grams; length: 2in.

US\$1,000 - 1,500



224

224
AN 18K BI-COLOR GOLD BAND, BUCCELLATI
signed Buccellati, Italy, no. 55037; with signed box; size: 6 1/4

US\$2,500 - 3,500



225

225
A TURQUOISE, EMERALD, DIAMOND, PLATINUM AND GOLD RING
estimated total diamond weight: 2.20cts; size: 6

US\$1,000 - 1,500



226



227



228



229



230



231



226

AN 18K GOLD BRACELET

weighing approximately: 97 grams; length: 7 1/2in.

US\$1,500 - 2,500

227

A RUBY, DIAMOND AND 18K GOLD BROOCH

estimated total diamond weight: 1.35cts; length: 1 3/8in.

US\$1,000 - 1,500

228

AN 18K GOLD AND TIGER'S EYE QUARTZ INTEGRAL BRACELET WRISTWATCH, PIAGET

manual wind mechanical movement; dial and bracelet signed; case no. 924A6 155592; gross weight approximately: 58 grams; length: 6 1/2in.

US\$2,000 - 2,500

229

A DIAMOND AND 18K GOLD BAND, ANGELA CUMMINGS

signed Cummings; estimated total diamond weight: 1.00ct; size: 5 1/2

US\$1,500 - 2,500

230^Y

A CORAL, SAPPHIRE AND DIAMOND BANGLE BRACELET AND RING SET, VITALI, ITALIAN

both signed Vitali, Roma; gross weight approximately: 44 grams; bracelet diameter: 2 1/4in.; ring size: 6

US\$3,000 - 5,000

231

A PAIR OF LAPIS LAZULI, DIAMOND AND 18K GOLD EAR CLIPS

estimated total diamond weight: 1.30cts; length: 7/8in.

US\$1,000 - 1,500



233

232



234



235



236



237

PROPERTY SOLD BY A PRIVATE CHARITABLE FOUNDATION

232
A PAIR OF LAPIS LAZULI, TURQUOISE, DIAMOND AND 18K GOLD DAY/NIGHT EARRINGS

pendant detachable; length: 1 7/8 to 3/4in.

US\$1,000 - 1,500

233
A BI-COLOR GOLD AND DIAMOND COLLAR NECKLACE, CIRCA 1960

gross weight approximately: 48 grams; length: 14in.

US\$1,000 - 1,500

PROPERTY OF VARIOUS OWNERS

234
A ROCK CRYSTAL, DIAMOND AND 18K GOLD RING, DONALD CLAFLIN FOR TIFFANY & CO.

signed *Tiffany* (indistinct), attributed to Donald Claflin; size: 6 1/2

US\$1,500 - 2,500

235
A ROCK CRYSTAL, DIAMOND AND 18K GOLD RING

unsigned, attributed to Donald Claflin for Tiffany & Co.; size: 6

US\$1,000 - 1,500

236
A CITRINE AND 18K GOLD RING, CARVIN FRENCH
 sugarloaf cabochon citrine approximately: 41.00cts; with maker's mark; size: 6 1/2

US\$1,000 - 1,500

237
AN 18K GOLD AND DIAMOND BANGLE BRACELET, MAUBOUSSIN, FRENCH
 signed *Mauboussin, Paris, no. C9907*; with French assay marks; gross weight approximately: 55 grams; diameter: 2 1/4in.

US\$3,000 - 5,000



238

239

240

241

242

238

A PAIR OF DIAMOND AND 18K GOLD HEART PENDANT EARRINGS

estimated total diamond weight: 3.70cts; length: 1 1/4in.

US\$2,000 - 3,000

239

A RUBY, DIAMOND AND 18K BI-COLOR GOLD NECKLACE, ITALIAN

estimated total diamond weight: 2.95cts; gross weight approximately: 60 grams; length: 17in.

US\$5,000 - 7,000

PROPERTY SOLD BY A PRIVATE CHARITABLE FOUNDATION

240

A RUBY, DIAMOND AND 18K GOLD BAND

size: 6 1/2

US\$1,000 - 1,500

PROPERTY OF VARIOUS OWNERS

241

AN 18K GOLD AND SAPPHIRE BRACELET, CARTIER, ITALIAN

signed Cartier, Italy, with Italian marks; gross weight approximately: 54 grams; length: 7 1/2in.

US\$1,000 - 1,500

242

AN 18K GOLD AND SAPPHIRE BROOCH

gross weight approximately: 28 grams; dimensions: 1 3/4 x 1 1/2in.

US\$1,200 - 1,400



PROPERTY FROM A PRIVATE OREGON COLLECTION

243
A GEM-SET, DIAMOND, 18K GOLD AND PLATINUM BRACELET AND EARRING SET, FRENCH

set overall with rubies, sapphires, emeralds and round brilliant cut diamonds; with French assay marks; estimated total diamond weight: 3.00cts; gross weight approximately: 85 grams; bracelet length: 6 1/4in., earring length: 7/8in.

US\$5,500 - 7,500

PROPERTY OF ANOTHER OWNER

244
A LAPIS LAZULI, DIAMOND AND 18K GOLD BOW NECKLACE, VAN CLEEF & ARPELS, FRENCH
signed VCA, no. 84B4397 L115 BOCT13; with French assay marks; length: 15 1/2in.

US\$1,800 - 2,500

PROPERTY FROM A PRIVATE OREGON COLLECTION

245
A LADY'S DIAMOND AND 18K BI-COLOR GOLD INTEGRAL BRACELET WRISTWATCH

jeweled movement; dial signed Geneve; estimated total diamond weight: 1.10cts; gross weight approximately: 37 grams; length: 6in.

US\$1,000 - 1,500

PROPERTY OF VARIOUS OWNERS

246
A PAIR OF DIAMOND AND 14K GOLD EAR CLIPS, HAMMERMAN BROTHERS
signed HB; estimated total diamond weight: 2.50cts; gross weight approximately: 25 grams; length: 1 7/8in.

US\$1,500 - 2,500

247
A RUBY, DIAMOND, SAPPHIRE AND 18K GOLD TURTLE CLIP-BROOCH, FRENCH, CIRCA 1955

signed J.W., France; with French assay marks; dimensions: 1 1/2 x 1in.

US\$1,000 - 1,500



248



249



250



251



252

248
AN 18K GOLD AND LEATHER STRAP NARROW 'TANK' WRISTWATCH, CARTIER, FRENCH
 manual wind; deployant buckle clasp; dial, case and bracelet signed; case no. 033293; with French assay marks; length: 5 3/4in.

US\$1,500 - 2,000

249
A PAIR OF CITRINE AND 18K GOLD EAR CLIPS, TIFFANY & CO., CIRCA 1990
 signed Tiffany & Co., 1990; length: 7/8in.

US\$1,500 - 2,000

250
AN 18K GOLD BRACELET, TIFFANY & CO., CIRCA 1960
 signed Tiffany, Italy; weighing approximately: 73 grams; length: 7 1/2in.

US\$2,000 - 3,000

251
AN ONYX, DIAMOND AND GOLD RING, R.STONE
 signed R.Stone; estimated total diamond weight: 1.00ct; size 8 1/2

US\$1,800 - 2,500

252
AN 18K GOLD SPIRAL CLIP-BROOCH, DAVID WEBB
 signed Webb; weighing approximately: 35 grams; length: 1 7/8in.

US\$3,000 - 5,000

253
A PAIR OF 18K GOLD 'DOPPIO CUORE' EAR CLIPS, BULGARI
 signed Bvlgari; length: 7/8in.

US\$1,500 - 2,000

254
A DIAMOND AND 18K GOLD RING, BULGARI
 signed Bvlgari; size: 7 1/2

US\$1,500 - 2,000

255
A CARVED CITRINE, AMETHYST AND 18K GOLD MULTI-STRAND NECKLACE, CARVIN FRENCH
 comprising five strands of graduated carved citrine and amethyst beads; with maker's mark; shortest length: 24in.

US\$5,000 - 7,000

256
A DIAMOND AND 18K GOLD BANGLE BRACELET, BULGARI
 signed Bvlgari, no. 1361; estimated total diamond weight: 2.70cts; gross weight approximately: 74 grams; diameter: 2in.

US\$4,000 - 6,000



253

254

255

256



257



258



259



260



261

257
A PAIR OF RUBY, CHALCEDONY AND 18K GOLD EAR CLIPS, SCHLUMBERGER FOR TIFFANY & CO., FRENCH
signed Tiffany & Co., Schlumberger, France; length: 1 in.

US\$4,000 - 6,000

258
A PINK TOURMALINE, DIAMOND AND 18K ROSE GOLD RING
oval pink tourmaline cabochon approximately: 11.75 x 8.60mm; size: 6 3/4

US\$800 - 1,200

259
A MORGANITE, PINK SAPPHIRE, DIAMOND AND 18K ROSE GOLD RING
pear-shaped morganite: 5.28cts; size: 6 1/4

US\$1,200 - 1,800

260
AN 18K GOLD 'SIGNATURE X' BRACELET, TIFFANY & CO.
signed T&Co.; with signed box; weighing approximately: 74 grams; length: 7 1/4in.

US\$2,000 - 3,000

261
A 22K BI-COLOR GOLD BANGLE BRACELET
weighing approximately: 48 grams; diameter: 2 1/2 in.

US\$1,500 - 2,000

262
A MOONSTONE, DIAMOND, RUBY, PLATINUM AND ROSE GOLD SNAKE RING
estimated total diamond weight: 2.75cts; size: 6 3/4

US\$2,500 - 3,500



262



264



266



263

265

263
**A ROSE QUARTZ, CULTURED PEARL,
RUBY, DIAMOND AND 18K GOLD
NECKLACE, VERDURA**
signed Verdura; length: 17in

US\$12,000 - 18,000

264
**A PAIR OF DIAMOND AND 18K ROSE
GOLD HOOP EARRINGS**
*estimated total diamond weight: 6.10cts;
diameter: 1 1/2in.*

US\$2,000 - 3,000

265
**A PINK SAPPHIRE, DIAMOND AND
18K ROSE GOLD CUFF BANGLE,
ALEXANDER LAUT**
*signed Laut, no. 7134; estimated total
diamond weight: 1.05cts; gross weight
approximately: 63 grams; diameter: 2 1/4in.*

US\$4,000 - 6,000

266
**A RUBELLITE TOURMALINE, PINK
SAPPHIRE, DIAMOND AND 18K GOLD
RING**
*pear-shaped rubellite cabochon
approximately: 27.0 x 14.0mm; size: 6 1/2*

US\$3,000 - 5,000



267



268



269



270



271

267

A TANZANITE, DIAMOND AND GOLD RING

oval-shaped tanzanite approximately: 11.70 x 8.60 x 6.29mm; estimated total diamond weight: 3.50cts; size: 8 1/2

US\$1,500 - 2,500

268

A PAIR OF DIAMOND AND 18K GOLD EARRINGS, ANGELA CUMMINGS, 1994

signed Cummings, 1994; estimated total diamond weight; 2.65cts; dimensions: 7/8 x 3/4in.

US\$2,000 - 3,000

269

AN 18K GOLD BRACELET

weighing approximately: 74 grams; length: 7 3/4in.

US\$2,000 - 3,000

270

A DIAMOND AND 18K GOLD RING

estimated total diamond weight: 3.50cts; size: 8 3/4

US\$1,800 - 2,500

271

A PAIR OF SOUTH SEA CULTURED PEARL, DIAMOND, GEM-SET AND 18K GOLD EARRINGS, ZORAB

pearls approximately 17.0mm; signed Zorab; gross weight approximately: 42 grams; length: 2 1/2in.

US\$5,000 - 6,000

272

A PAIR OF DIAMOND AND 18K GOLD HOOP EARRINGS

no. 48373; estimated total diamond weight: 4.00cts; diameter: 1 1/8in.

US\$2,000 - 3,000



272



273



274



275

273
A SOUTH SEA BAROQUE CULTURED PEARL, DIAMOND AND GEM-SET 18K GOLD NECKLACE, ZORAB
pearls approximately 25.0 to 15.6mm; signed Zorab; estimated total diamond weight: 6.00cts; length: 27 1/2in.

US\$12,000 - 18,000

274
A DIAMOND AND 18K GOLD BAND, CARTIER
signed Cartier, no. 719354; size: 6
US\$1,800 - 2,500

275
A DIAMOND AND 18K GOLD ETERNITY BAND
estimated total diamond weight; 6.15cts; size: 7
US\$3,000 - 5,000



276



278



277



279

276

AN ENAMEL, DIAMOND AND 18K GOLD WESTIE BROOCH, ENGLISH, 1989

with English hallmarks, London, 1989; dimensions: 1 1/2 x 1 1/8in.

US\$1,000 - 1,500

277

A PAIR OF BLACK ONYX AND 18K TRI-COLOR GOLD CUFFLINKS, CARTIER

signed Cartier, no. 239; diameter: 1/2in.

US\$800 - 1,200

278

A PAIR OF BLACK JADE AND 18K GOLD EAR CLIPS, ANGELA CUMMINGS

signed Angela Cummings; length: 7/8in.

US\$2,500 - 3,500

279

A BLACK ONYX AND 18K GOLD NECKLACE AND BRACELET SET, CALGARO, ITALIAN

signed Calgaro, Italy; gross weight approximately: 83 grams; necklace length: 16in.; bracelet length: 7in.

US\$2,500 - 3,500



280
AN 18K GOLD AND GEM-SET 'HAPPY DIAMONDS' TEDDY BEAR BROOCH, CHOPARD
signed Chopard no. 90/2121-20 9625017; length: 1 1/8in.

US\$1,500 - 2,500

281
A PINK SAPPHIRE, DIAMOND, 18K GOLD AND PLATINUM RING
cushion-shaped pink sapphire weighing: 2.08cts; size 6

US\$3,000 - 5,000

282
A RUBY, DIAMOND AND 18K GOLD NECKLACE, TIFFANY & CO.
signed Tiffany & Co.; gross weight approximately : 26 grams; length: 16in.

US\$2,000 - 3,000

283
A PAIR OF ONYX AND 18K GOLD DAY/ NIGHT EARRINGS
onyx loops detachable; one earring signed VCA, no. 3V636-14; length: 2in.

US\$3,000 - 5,000

284
A CACHOLONG, RUBY, DIAMOND AND GOLD BRACELET
estimated total diamond weight: 1.35cts; length: 7 5/8in.

US\$2,000 - 3,000

285
A PAIR OF PSILOMELANE, DIAMOND AND 18K GOLD EAR CLIPS
estimated total diamond weight: 1.30cts; length: 1in.

US\$1,000 - 1,500



286

286

287

288

289

**286
A SET OF GEM-SET, DIAMOND AND 18K GOLD JEWELRY, PIERER**

comprising a necklace, bracelet and pair of ear clips; all signed Pierer; gross weight approximately: 145 grams; necklace length: 17 1/4in.; bracelet: 6 3/4in. (flexible); ear clip: 1 1/2in.

US\$1,500 - 2,500

**287
A PAIR OF DIAMOND, 18K GOLD AND PLATINUM 'ETOILE' EARRINGS, TIFFANY & CO.**

signed Tiffany & Co.; length: 3/4in.

US\$1,500 - 2,500

**288
A JADEITE JADE AND GOLD RING**

oval jadeite jade cabochon approximately: 16.05 x 11.83 x 5.73mm; size: 7 1/4

US\$2,000 - 3,000

Mason-Kay report #160926-2, dated September 26, 2016, stating: Natural Jadeite Jade - No Dye or Polymer detected - 'A' Jade.

**289
A 22K GOLD AND GEM-SET BRACELET**

gross weight approximately: 71 grams; length: 7in.

US\$2,500 - 3,500



290

290
A JADEITE JADE, DIAMOND AND 14K GOLD RING

oval jadeite jade cabochon approximately: 12.80 x 9.10 x 3.65mm; size 6 1/2

US\$3,000 - 5,000

Mason-Kay report #160513-3, dated May 13, 2016, stating: Natural Jadeite Jade, No Dye or Polymer Detected - 'A' Jade.

291

291
AN 18K GOLD INTEGRAL BRACELET WRISTWATCH, PATEK PHILIPPE

quartz; dial and bracelet signed Patek Philippe, Geneve; with Swiss assay marks; gross weight approximately: 103 grams; length: 7 1/2in.

US\$3,000 - 5,000

292
A GARNET AND 18K BI-COLOR GOLD DRESS-SET

comprising four shirt studs and a pair of cufflinks; gross weight approximately: 34 grams; diameter: 7/8in. and 7/16in.

US\$2,000 - 3,000

292

293

293 Y
A CORAL, GREEN ONYX AND ROCK CRYSTAL BEAD NECKLACE

with invisible gold clasp; length: 18in.

US\$1,500 - 2,500

PROPERTY OF A FLORIDA PRIVATE COLLECTOR

294
A DIAMOND AND 14K GOLD THREE-STONE RING

set with three square brilliant-cut diamonds; estimated total diamond weight: 1.50cts; size 7

US\$2,000 - 3,000

294



295



296



297



298



299



300

PROPERTY OF VARIOUS OWNERS

295
**A PAIR OF FIRE OPAL, DIAMOND,
 BLACK ENAMEL AND BI-COLOR GOLD
 EAR PENDANTS**

each centering a cushion-shaped fire opal,
 measuring approximately: 19.00 x 12.90
 x 8.55mm and 19.09 x 13.05 x 8.76mm,
 estimated total diamond weight: 1.30cts;
 length: 2 1/4in.

US\$2,000 - 3,000

296 ^Y
**A HEMATITE, CORAL AND 18K GOLD
 WOVEN BEADED NECKLACE, CARVIN
 FRENCH**

ending in two carved hematite finials; with
 maker's mark; length: 23in.

US\$1,000 - 1,500

297
**A PAIR OF COLORED DIAMOND,
 DIAMOND AND 18K WHITE GOLD HOOP
 EARRINGS**

estimated total colorless diamond weight:
 1.40cts.; diameter: 1 1/2in. (colored
 diamonds untested for origin of color)

US\$1,200 - 1,800

298
**A SILVER AND BLACK HARDSTONE
 CUFF BANGLE, ANTONIO PINEDA,
 CIRCA 1960**

signed with maker's mark, no. ZZ751;
 diameter: 2 3/8in.

US\$5,000 - 7,000

299
**A ZIRCON, DIAMOND AND 18K WHITE
 GOLD RING**

triangular-shaped zircon weighing: 6.53cts;
 estimated total diamond weight: 1.25cts;
 size: 7

US\$1,000 - 1,500



301

303

302

304

301

300

A COLORED DIAMOND, DIAMOND AND 18K WHITE GOLD RING

estimated total diamond weight: 5.10cts; size: 6 3/4 (colored diamonds untested for origin of color)

US\$1,000 - 1,500

301

A MULTI-COLORED SAPPHIRE AND SILVER NECKLACE AND BRACELET SET

each comprising multi strands of faceted fancy colored sapphire beads; necklace length: 18in.; bracelet length: 7 1/2in.

US\$1,000 - 1,500

302

A GARNET, DIAMOND AND PLATINUM RING

cushion-shaped garnet approximately 12.70 x 11.55 x 7.25mm; size: 6

US\$1,500 - 2,500

303

A MOONSTONE, SPESSARTITE GARNET, DIAMOND AND 18K GOLD RING

oval moonstone cabochon approximately: 15.80 x 12.00 x 8.75mm; size: 7

US\$1,200 - 1,800

304

A PAIR OF COLORED DIAMOND, DIAMOND AND 18K BI-COLOR GOLD EARRINGS

estimated total diamond weight: 11.00cts; length 2 3/4in. (colored diamonds untested for origin of color)

US\$1,000 - 1,500



305

A DIAMOND AND SILVER COLLAR

set with semi-faceted slices and round brilliant-cut diamonds; *length: 16in.*

US\$8,000 - 12,000

PROPERTY FROM A PRIVATE OREGON COLLECTION

306

TWO GEM-SET AND GOLD RINGS

one set with a lapis lazuli cabochon and diamonds, the other with a carnelian intaglio; *size: 5 and 8*

US\$1,000 - 1,500

307

AN ENAMEL AND GOLD 'TOTEM' PENDANT/BROOCH TOGETHER WITH A PAIR OF EARRINGS

pendant suspended from a 14k gold curb link chain; *gross weight approximately: 199 grams; pendant length: 4in.; earring length: 7/8in.*

US\$3,000 - 5,000



309



307



308



310

311

PROPERTY OF VARIOUS OWNERS

308

A US GOLD COIN AND 14K GOLD PENDANT

set with a \$20 Standing Liberty gold coin, dated 1908; gross weight approximately: 43 grams; length: 1 7/8in.

US\$1,000 - 1,500

309

A DIAMOND AND 18K BI-COLOR GOLD NECKLACE, BVLGARI

signed Bvlgari; estimated total diamond weight: 1.30ct; gross weight approximately: 93 grams; length: 16in.

US\$3,000 - 5,000

310

AN 18K GOLD WOVEN BRACELET

weighing approximately: 55 grams; length: 7in.

US\$1,500 - 2,500

311

AN ONYX, DIAMOND AND 18K GOLD DRESS SET

comprising a pair of cufflinks and three shirt studs; estimated total diamond weight: 1.00ct; gross weight approximately: 29 grams; length: 3/4 and 1/2in.

US\$2,000 - 3,000



**PROPERTY FROM A PRIVATE
OREGON COLLECTION**

312

**A COLLECTION OF SOUTHWEST
TURQUOISE AND SILVER JEWELRY**

comprising a squash blossom necklace,
pair of pendant earrings, cuff bangle and
ring; necklace length: 30in.; earring length:
2 1/4in.; bangle diameter: 2 1/4in.;
ring size: 7

US\$300 - 500

END OF SALE



312

THE KENNEDY YEARS

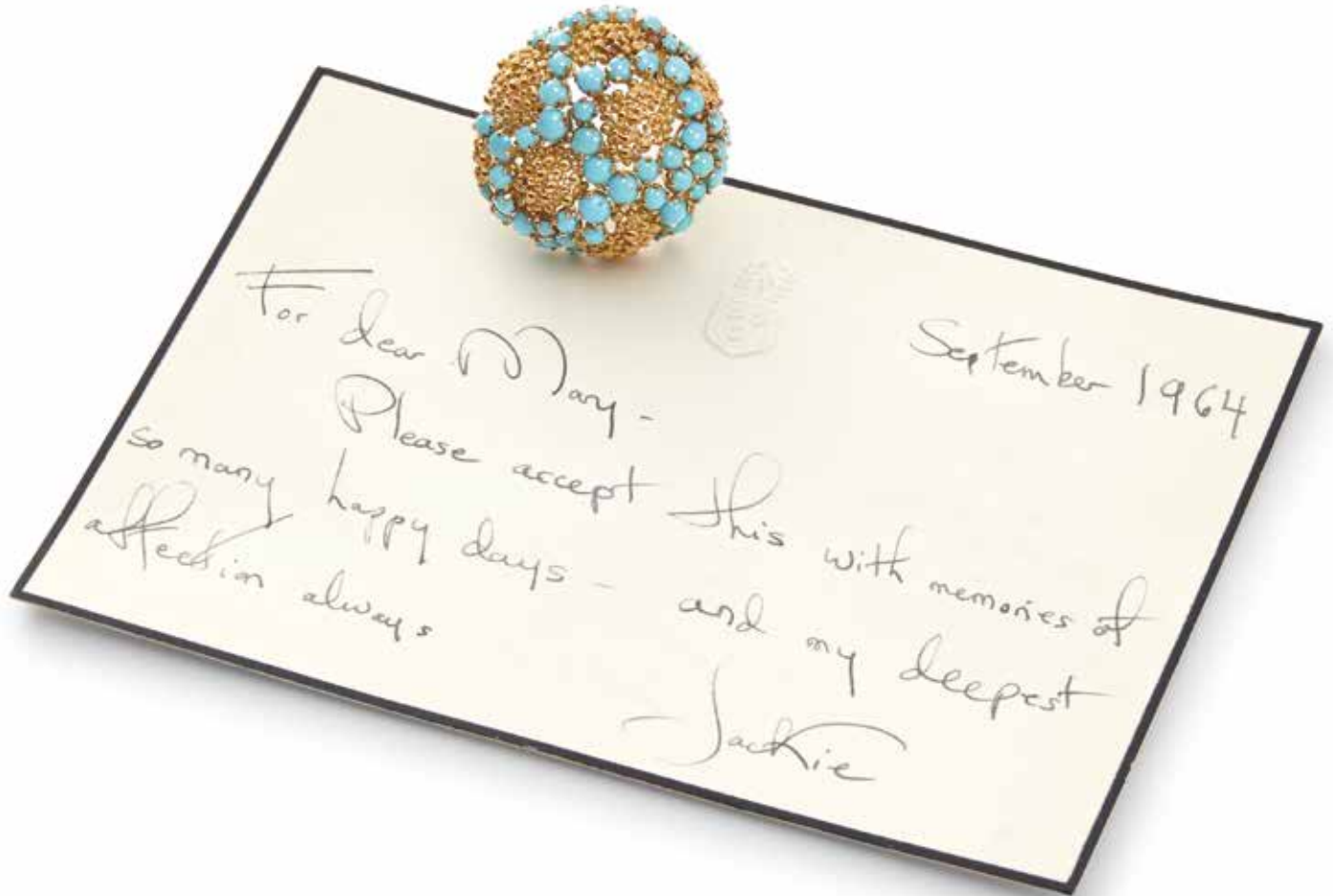
Wednesday March 8, 2017
New York

Consignments for 2017 Sales Invited

INQUIRIES

(212) 710 1308
books.us@bonhams.com

Closing date for entries
Monday January 30, 2017



Bonhams

NEW YORK

bonhams.com/books

PRINTS & MULTIPLES

Tuesday April 18, 2017
Los Angeles

Consignments now invited

EDWARD RUSCHA

OK (State I), 1990
colour lithograph
Sold for \$40,000
a world record

INQUIRIES

Judith Eurich
+1 (415) 503 3259
judith.eurich@bonhams.com

Morisa Rosenberg
+1 (323) 436 5435
morisa.rosenberg@bonhams.com



Bonhams

DIAMOND GRADING

COLOR

GIA	CIBJO	UK TRADITIONAL
D	Exceptional White +	Finest White
E	Exceptional White	Finest White
F	Rare White +	Fine White
G	Rare White	Fine White
H	White	White
I	Slightly Tinted White	Commercial White
J	Slightly Tinted White	Top Silver Cape
K	Tinted White	Top Silver Cape
L	Tinted White	Silver Cape
M TO N	Tinted Color	Light Cape
O TO R	Tinted Color	Cape
R TO Z	Tinted Color	Dark Cape

CLARITY

IF	Internally Flawless	No inclusions and only insignificant surface blemishes when viewed under 10X magnification
VVS1 - VVS2	Very Very Slightly Included	Minute inclusions that are incredibly difficult to see under 10X magnification, generally only visible from the back of the stone and may be removed easily by repolishing
VS1 - VS2	Very Slightly Included	Minor inclusions that range from difficult (VS1) to slightly easier (VS2) to see under 10X magnification
SI1 - 2	Slightly Included	Noticeable inclusions that are easy (SI1) or very easy (SI2) to see under 10X magnification
I1 - 3	Obvious Inclusions	Obvious inclusions that are easily visible under 10X magnification and in some cases may even be seen without magnification

RING SIZES

ENGLISH	METRIC	AMERICAN	FRENCH/JAPANESE
A	37.8252	½	-
A½	38.4237	¾	-
B	39.0222	1	-
B½	39.6207	1¼	-
C	40.2192	1½	-
C½	40.8177	1¾	-
D	41.4162	2	1
D½	42.0147	2¼	2
E	42.6132	2½	-
E½	43.2117	2¾	3
F	43.8102	3	4
F½	44.4087	3¼	-
G	45.0072	3½	5
G½	45.6057	3¾	-
H	46.2042	4	6
H½	46.8027	4¼	-
I	47.4012	4½	7
I½	47.9997	4¾	8
J	48.5982	5	-
J½	49.1967	5¼	9
K	49.7952	5½	10
K½	50.3937	5¾	-
L	50.9922	6	11
L½	51.5907	6¼	-
M	52.1892	6½	12
M½	52.7877	6¾	13
N	53.4660	7	-
N½	54.1044	7¼	14
O	54.7428	7½	15
O½	55.3812	7¾	-
P	56.0196	8	16
P½	56.6580	8¼	-
Q	57.2964	8½	17
Q½	57.9348	8¾	18
R	58.5732	9	-
R½	59.2116	9¼	19
S	59.8500	9½	20
S½	60.4884	9¾	-
T	61.1268	10	21
T½	61.7652	10¼	22
U	62.4026	10½	-
U½	63.0420	10¾	23
V	63.6804	11	24
V½	64.3188	11¼	-
W	64.8774	11½	25
W½	65.4759	11¾	-
X	66.0744	12	26
X½	66.6729	12¼	-
Y	67.2714	12½	-
Y½	67.8699	12¾	-
Z	68.4684	13	-

CONDITIONS OF SALE

The following Conditions of Sale, as amended by any published or posted notices or verbal announcements during the sale, constitute the entire terms and conditions on which property listed in the catalog shall be offered for sale or sold by Bonhams & Butterfields Auctioneers Corp. and any consignor of such property for whom we act as agent. If live online bidding is available for the subject auction, additional terms and conditions of sale relating to online bidding will apply; see www.bonhams.com/WebTerms for the supplemental terms. As used herein, "Bonhams," "we" and "us" refer to Bonhams & Butterfields Auctioneers Corp.

1. As used herein, the term "bid price" means the price at which a lot is successfully knocked down to the purchaser. The term "purchase price" means the aggregate of (a) the bid price, (b) a PREMIUM retained by us and payable by the purchaser EQUAL TO 25% OF THE FIRST \$150,000 OF THE BID PRICE, 20% OF THE AMOUNT OF THE BID PRICE ABOVE \$150,000 UP TO AND INCLUDING \$3,000,000, AND 12% OF THE AMOUNT OF THE BID PRICE OVER \$3,000,000, and (c) unless the purchaser is exempt by law from the payment thereof, any Arizona, California, Colorado, Connecticut, Florida, Georgia, Illinois, Massachusetts, Nevada, New Jersey, New York, Pennsylvania, Texas, Virginia, Washington, D.C., Washington state, or other state or local sales tax (or compensating use tax) and other applicable taxes.

2. On the fall of the auctioneer's hammer, the highest bidder shall have purchased the offered lot in accordance and subject to compliance with all of the conditions set forth herein and (a) assumes full risk and responsibility therefor, (b) if requested will sign a confirmation of purchase, and (c) will pay the purchase price in full or such part as we may require for all lots purchased. No lot may be transferred. Any person placing a bid as agent on behalf of another (whether or not such person has disclosed that fact or the identity of the principal) may be jointly and severally liable with the principal under any contract resulting from the acceptance of a bid.

Unless otherwise agreed, payment in good funds is due and payable within five (5) business days following the auction sale. Whenever the purchaser pays only a part of the total purchase price for one or more lots purchased, we may apply such payments, in our sole discretion, to the lot or lots we choose. Payment will not be deemed made in full until we have collected good funds for all amounts due.

Payment for purchases may be made in or by (a) cash, (b) cashier's check or money order, (c) personal check with approved credit drawn on a U.S. bank, (d) wire transfer or other immediate bank transfer, or (e) Visa, MasterCard, American Express or Discover credit, charge or debit card. A processing fee will be assessed on any returned checks. Please note that the amount of cash notes and cash equivalents that can be accepted from a given purchaser may be limited.

The purchaser grants us a security interest in the property, and we may retain as collateral security for the purchaser's obligations to us, any property and all monies held or received by us for the account of the purchaser, in our possession. We retain all rights of a secured party under the California Commercial Code. If the foregoing conditions or any other applicable conditions herein are not complied with, in addition to other remedies available to us and the consignor by law, including without limitation, the right to hold the purchaser liable for the purchase price, we at our option may either (a) cancel the sale, retaining as liquidated damages all payments made by the purchaser or (b) resell the property, either publicly or privately, and in such

event the purchaser shall be liable for the payment of any deficiency plus all costs and expenses of both sales, our commission at our standard rates, all other charges due hereunder, attorneys' fees, expenses and incidental damages. In addition, where two or more amounts are owed in respect of different transactions by the purchaser to us, to Bonhams 1793 Limited and/or to any of our other affiliates, subsidiaries or parent companies worldwide within the Bonhams Group, we reserve the right to apply any monies paid in respect of a transaction to discharge any amount owed by the purchaser. If all fees, commissions, premiums, bid price and other sums due to us from the purchaser are not paid promptly as provided in these Conditions of Sale, we reserve the right to impose a finance charge equal to 1.5% per month on all amounts due to us beginning on the 31st day following the sale until payment is received, in addition to other remedies available to us by law.

3. We reserve the right to withdraw any property and to divide and combine lots at any time before such property's auction. Unless otherwise announced by the auctioneer at the time of sale, all bids are per lot as numbered in the catalog and no lots shall be divided or combined for sale.

4. We reserve the right to reject a bid from any bidder, to split any bidding increment, and to advance the bidding in any manner the auctioneer may decide. In the event of any dispute between bidders, or in the event the auctioneer doubts the validity of any bid, the auctioneer shall have sole and final discretion either to determine the successful bidder or to re-offer and resell the article in dispute. If any dispute arises after the sale, our sales records shall be conclusive in all respects.

5. If we are prevented by fire, theft or any other reason whatsoever from delivering any property to the purchaser or a sale otherwise cannot be completed, our liability shall be limited to the sum actually paid therefor by the purchaser and shall in no event include any compensatory, incidental or consequential damages.

6. If a lot is offered subject to a reserve, we may implement such reserve by bidding on behalf of the consignor, whether by opening bidding or continuing bidding in response to other bidders until reaching the reserve. If we have an interest in an offered lot and the proceeds therefrom other than our commissions, we may bid therefor to protect such interest. **CONSIGNORS ARE NOT ALLOWED TO BID ON THEIR OWN ITEMS.**

7. All statements contained in the catalog or in any bill of sale, condition report, invoice or elsewhere as to authorship, period, culture, source, origin, measurement, quality, rarity, provenance, importance, exhibition and literature of historical relevance, or physical condition **ARE QUALIFIED STATEMENTS OF OPINION AND NOT REPRESENTATIONS OR WARRANTIES.** No employee or agent of Bonhams is authorized to make on our behalf or on that of the consignor any representation or warranty, oral or written, with respect to any property.

8. All purchased property shall be removed from the premises at which the sale is conducted by the date(s) and time(s) set forth in the "Buyer's Guide" portion of this catalog. Property designated with a "W" and associated purchased lots, if not removed promptly following sale, will be transferred to an offsite warehouse at the purchaser's risk and expense, as set forth in more detail in the "Buyer's Guide." Purchased property that is permitted to remain onsite at Bonhams' facility should be removed at the purchaser's expense not later than 5:00 p.m. Pacific Time five (5) business days following the date of the sale. If not so removed, a storage fee of \$5.00 per lot per day will be payable to us by the purchaser beginning at the close

of the 21st day following the sale, and we may thereafter transfer such property to an offsite warehouse at the purchaser's risk and expense. Accounts must be settled in full before property will be released. Packing and handling of purchased lots are the responsibility of the purchaser. Bonhams can provide packing and shipping services for certain items as noted in the "Buyer's Guide" section of the catalog.

9. The copyright in the text of the catalog and the photographs, digital images and illustrations of lots in the catalog belong to Bonhams or its licensors. You will not reproduce or permit anyone else to reproduce such text, photographs, digital images or illustrations without our prior written consent.

10. These Conditions of Sale shall bind the successors and assigns of all bidders and purchasers and inure to the benefit of our successors and assigns. No waiver, amendment or modification of the terms hereof (other than posted notices or oral announcements during the sale) shall bind us unless specifically stated in writing and signed by us. If any part of these Conditions of Sale is for any reason invalid or unenforceable, the rest shall remain valid and enforceable.

11. These Conditions of Sale and the purchaser's and our respective rights and obligations hereunder are governed by the laws of the State of California. By bidding at an auction, each purchaser and bidder agrees to be bound by these Conditions of Sale. Any dispute, controversy or claim arising out of or relating to this agreement, or the breach, termination or validity thereof, brought by or against Bonhams (but not including claims brought against the consignor by the purchaser of lots consigned hereunder) shall be resolved by the procedures set forth below.

MEDIATION AND ARBITRATION PROCEDURES

(a) Within 30 days of written notice that there is a dispute, the parties or their authorized and empowered representatives shall meet by telephone and/or in person to mediate their differences. If the parties agree, a mutually acceptable mediator shall be selected and the parties will equally share such mediator's fees. The mediator shall be a retired judge or an attorney familiar with commercial law and trained in or qualified by experience in handling mediations. Any communications made during the mediation process shall not be admissible in any subsequent arbitration, mediation or judicial proceeding. All proceedings and any resolutions thereof shall be confidential, and the terms governing arbitration set forth in paragraph (c) below shall govern.

(b) If mediation does not resolve all disputes between the parties, or in any event no longer than 60 days after receipt of the written notice of dispute referred to above, the parties shall submit the dispute for binding arbitration before a single neutral arbitrator. Such arbitrator shall be a retired judge or an attorney familiar with commercial law and trained in or qualified by experience in handling arbitrations. Such arbitrator shall make all appropriate disclosures required by law. The arbitrator shall be drawn from a panel of a national arbitration service agreed to by the parties, and shall be selected as follows: (i) If the national arbitration service has specific rules or procedures, those rules or procedures shall be followed; (ii) If the national arbitration service does not have rules or procedures for the selection of an arbitrator, the arbitrator shall be an individual jointly agreed to by the parties. If the parties cannot agree on a national arbitration service, the arbitration shall be conducted by the American Arbitration Association, and the arbitrator shall be selected in accordance with the Rules of the

CONDITIONS OF SALE - CONTINUED

American Arbitration Association. The arbitrator's award shall be in writing and shall set forth findings of fact and legal conclusions.

(c) Unless otherwise agreed to by the parties or provided by the published rules of the national arbitration service:

(i) the arbitration shall occur within 60 days following the selection of the arbitrator;

(ii) the arbitration shall be conducted in the designated location, as follows: (A) in any case in which the subject auction by Bonhams took place or was scheduled to take place in the State of New York or Connecticut or the Commonwealth of Massachusetts, the arbitration shall take place in New York City, New York; (B) in all other cases, the arbitration shall take place in the city of San Francisco, California; and

(iii) discovery and the procedure for the arbitration shall be as follows:

(A) All arbitration proceedings shall be confidential;

(B) The parties shall submit written briefs to the arbitrator no later than 15 days before the arbitration commences;

(C) Discovery, if any, shall be limited as follows: (I) Requests for no more than 10 categories of documents, to be provided to the requesting party within 14 days of written request therefor; (II) No more than two (2) depositions per party, provided however, the deposition(s) are to be completed within one (1) day; (III) Compliance with the above shall be enforced by the arbitrator in accordance with California law;

(D) Each party shall have no longer than eight (8) hours to present its position. The entire hearing before the arbitrator shall not take longer than three (3) consecutive days;

(E) The award shall be made in writing no more than 30 days following the end of the proceeding. Judgment upon the award rendered by the arbitrator may be entered by any court having jurisdiction thereof.

To the fullest extent permitted by law, and except as required by applicable arbitration rules, each party shall bear its own attorneys' fees and costs in connection with the proceedings and shall share equally the fees and expenses of the arbitrator.

LIMITED RIGHT OF RESCISSION

If within one (1) year from the date of sale, the original purchaser (a) gives written notice to us alleging that the identification of Authorship (as defined below) of such lot as set forth in the **BOLD TYPE** heading of the catalog description of such lot (as amended by any saleroom notices or verbal announcements during the sale) is not substantially correct based on a fair reading of the catalog (including the terms of any glossary contained therein), and (b) within 10 days after such notice returns the lot to us in the same condition as at the time of sale, and (c) establishes the allegation in the notice to our satisfaction (including by providing one or more written opinions by recognized experts in the field, as we may reasonably require), then the sale of such lot will be rescinded and, unless we have already paid to the consignor monies owed him in connection with the sale, the original purchase price will be refunded.

If, prior to receiving such notice from the original purchaser alleging such defect, we have paid the consignor monies owed him in connection with the sale, we shall pay the original purchaser the amount of our commissions, any other sale proceeds to which we are entitled and applicable taxes received from the purchaser on the sale and make demand on the consignor to pay the balance of the original purchase price to the original purchaser. Should the consignor fail to pay such amount promptly, we may disclose the identity of the consignor and assign to the original purchaser our rights against the consignor with respect to the lot the sale of which is sought to be rescinded. Upon such disclosure and assignment, any liability of Bonhams as consignor's agent with respect to said lot shall automatically terminate.

The foregoing limited right of rescission is available to the original purchaser only and may not be assigned to or relied upon by any subsequent transferee of the property sold. The purchaser hereby accepts the benefit of the consignor's warranty of title and other representations and warranties made by the consignor for the purchaser's benefit. Nothing in this section shall be construed as an admission by us of any representation of fact, express or implied, obligation or responsibility with respect to any lot. **THE PURCHASER'S SOLE AND EXCLUSIVE**

REMEDY AGAINST BONHAMS FOR ANY REASON WHATSOEVER IS THE LIMITED RIGHT OF RESCISSION DESCRIBED IN THIS SECTION.

"Authorship" means only the identity of the creator, the period, culture and source or origin of the lot, as the case may be, as set forth in the **BOLD TYPE** heading of the print catalog entry. The right of rescission does not extend to: (a) works of art executed before 1870 (unless these works are determined to be counterfeits created since 1870), as this is a matter of current scholarly opinion which can change; (b) titles, descriptions, or other identification of offered lots, which information normally appears in lower case type below the **BOLD TYPE** heading identifying the Authorship; (c) Authorship of any lot where it was specifically mentioned that there exists a conflict of specialist or scholarly opinion regarding the Authorship of the lot at the time of sale; (d) Authorship of any lot which as of the date of sale was in accordance with the then generally-accepted opinion of scholars and specialists regarding the same; or (e) the identification of periods or dates of creation in catalog descriptions which may be proven inaccurate by means of scientific processes that are not generally accepted for use until after publication of the catalog in which the property is offered or that were unreasonably expensive or impractical to use at the time of such publication.

LIMITATION OF LIABILITY

EXCEPT AS EXPRESSLY PROVIDED ABOVE, ALL PROPERTY IS SOLD "AS IS." NEITHER BONHAMS NOR THE CONSIGNOR MAKES ANY REPRESENTATION OR WARRANTY, EXPRESS OR IMPLIED, AS TO THE MERCHANTABILITY, FITNESS OR CONDITION OF THE PROPERTY OR AS TO THE CORRECTNESS OF DESCRIPTION, GENUINENESS, ATTRIBUTION, PROVENANCE OR PERIOD OF THE PROPERTY OR AS TO WHETHER THE PURCHASER ACQUIRES ANY COPYRIGHTS OR OTHER INTELLECTUAL PROPERTY RIGHTS IN LOTS SOLD OR AS TO WHETHER A WORK OF ART IS SUBJECT TO THE ARTIST'S MORAL RIGHTS OR OTHER RESIDUAL RIGHTS OF THE ARTIST. THE PURCHASER EXPRESSLY ACKNOWLEDGES AND AGREES THAT IN NO EVENT SHALL BONHAMS BE LIABLE FOR ANY DAMAGES INCLUDING, WITHOUT LIMITATION, ANY COMPENSATORY, INCIDENTAL OR CONSEQUENTIAL DAMAGES.

SELLER'S GUIDE

SELLING AT AUCTION

Bonhams can help you every step of the way when you are ready to sell art, antiques and collectible items at auction. Our regional offices and representatives throughout the US are available to service all of your needs. Should you have any further questions, please visit our website at www.bonhams.com/us for more information or call our Client Services Department at +1 (800) 223 2854 ext. 23550.

AUCTION ESTIMATES

The first step in the auction process is to determine the auction value of your property. Bonhams' world-renowned specialists will evaluate your special items at no charge and in complete confidence. You can obtain an auction estimate in many ways:

- Attend one of our Auction Appraisal Events held regularly at our galleries and in other major metropolitan areas. The updated schedule for Bonhams Auction Appraisal Events is available at www.bonhams.com/us.
- Call our Client Services Department to schedule a private appointment at one of our galleries. If you have a large collection, our specialists can travel, by appointment, to evaluate your property on site.
- Send clear photographs to us of each individual item, including item dimensions and other pertinent information with each picture. Photos should be sent to Bonhams' address in envelopes marked

as "photo auction estimate". Alternatively, you can submit your request using our online form at www.bonhams.com/us. Digital images may be attached to the form. Please limit your images to no more than five (5) per item.

CONSIGNING YOUR PROPERTY

After you receive an estimate, you may consign your property to us for sale in the next appropriate auction. Our staff assists you throughout the process, arranging transportation of your items to our galleries (at the consignor's expense), providing a detailed inventory of your consignment, and reporting the prices realized for each lot. We provide secure storage for your property in our warehouses and all items are insured throughout the auction process. You will receive payment for your property approximately 35 days after completion of sale.

Sales commissions vary with the potential auction value of the property and the particular auction in which the property is offered. Please call us for commission rates.

PROFESSIONAL APPRAISAL SERVICES

Bonhams' specialists conduct insurance and fair market value appraisals for private collectors, corporations, museums, fiduciaries and government entities on a daily basis. Insurance appraisals, used for insurance purposes, reflect the cost of replacing property in today's retail market. Fair market value appraisals are used for estate,

tax and family division purposes and reflect prices paid by a willing buyer to a willing seller.

When we conduct a private appraisal, our specialists will prepare a thorough inventory listing of all your appraised property by category. Valuations, complete descriptions and locations of items are included in the documentation.

Appraisal fees vary according to the nature of the collection, the amount of work involved, the travel distance, and whether the property is subsequently consigned for auction.

Our appraisers are available to help you anywhere and at any time. Please call our Client Services Department to schedule an appraisal.

ESTATE SERVICES

Since 1865, Bonhams has been serving the needs of fiduciaries – lawyers, trust officers, accountants and executors – in the disposition of large and small estates. Our services are specially designed to aid in the efficient appraisal and disposition of fine art, antiques, jewelry, and collectibles. We offer a full range of estate services, ranging from flexible financial terms to tailored accounting for heirs and their agents to world-class marketing and sales support.

For more information or to obtain a detailed Trust and Estates package, please visit our website at www.bonhams.com/us or contact our Client Services Department.

BUYER'S GUIDE

BIDDING & BUYING AT AUCTION

Whether you are an experienced bidder or an enthusiastic novice, auctions provide a stimulating atmosphere unlike any other. Bonhams previews and sales are free and open to the public. As you will find in these directions, bidding and buying at auction is easy and exciting. Should you have any further questions, please visit our website at www.bonhams.com or call our Client Services Department at +1 (800) 223 2854 ext. 23550.

Catalogs

Before each auction we publish illustrated catalogs that include dates and times for previews and auctions. Our catalogs also provide descriptions and estimated values for each "lot." A lot may refer to a single item or to a group of items auctioned together. We offer our catalogs by subscription or by single copy. For information on subscribing to our catalogs, you may refer to the subscription form in this catalog, call our Client Services Department, or visit our website at www.bonhams.com/us.

Previews

Auction previews are your chance to inspect each lot prior to the auction. We encourage you to look closely and examine each object on which you may want to bid so that you will know as much as possible about it. Items are sold "as is" and with all faults; illustrations in our catalogs, website and other materials are provided for identification only. At the previews, our staff is always available to answer your questions and guide you through the auction process. Condition reports may be available upon request.

Estimates

Bonhams catalogs include estimates for each lot, exclusive of buyer's premium and tax. The estimates are provided as an approximate guide to current market value and should not be interpreted as a representation or prediction of actual selling prices. They are determined well in advance of a sale and are subject to revision. Please contact us should you have any questions about value estimates.

Reserves

All lots in a catalog are subject to a reserve unless otherwise indicated. The reserve is the minimum price that the seller is willing to accept for a lot. This amount is confidential and does not exceed the low estimated value.

BIDDING AT AUCTION

At Bonhams, you can bid in many ways: in person, via absentee bid, over the phone, or via Bonhams' online bidding facility. Absentee bids can be submitted in person, online, via fax or via email.

A valid Bonhams client account is required to participate in bidding activity. You can obtain registration information online, at the reception desk or by calling our Client Services Department.

By bidding at auction, whether in person or by agent, by absentee bid, telephone, online or other means, the buyer or bidder agrees to be bound by the Conditions of Sale.

Lots are auctioned in consecutive numerical order as they appear in the catalog. Bidding normally begins below the low estimate. The auctioneer will accept bids from interested parties present in the saleroom, from telephone bidders, and from absentee bidders who have left written bids in advance of the sale. The auctioneer may also execute bids on behalf of the consignor up to the amount of the reserve, but never above it.

We assume no responsibility for failure to execute bids for any reason whatsoever.

In Person

If you are planning to bid at auction, you will need to register at the reception desk in order to receive a numbered bid card. To place a bid, hold up your card so that the auctioneer can clearly see it. Decide on the maximum amount that you wish to pay, exclusive of buyer's premium and tax, and continue bidding until your bid prevails or you reach your limit. If you are the successful bidder on a lot, the auctioneer will acknowledge your paddle number and bid amount.

Absentee Bids

As a service to those wishing to place bids, we may at our discretion accept bids without charge in advance of sale by telephone, by facsimile or in writing on bidding forms available from us. "Buy" bids will not be accepted; all bids must state the highest bid price the bidder is willing to pay. Our auction staff

will try to bid just as you would, with the goal of obtaining the item at the lowest bid price possible. In the event identical bids are submitted, the earliest bid submitted will take precedence. Absentee bids shall be executed in competition with other absentee bids, any applicable reserve, and bids from other auction participants. A friend or agent may place bids on your behalf, provided that we have received your written authorization prior to the sale. Absentee bid forms are available in our catalogs, online at www.bonhams.com/us, and at our San Francisco, Los Angeles and New York galleries.

By Telephone

Under special circumstances, we can arrange for you to bid by telephone. To arrange for a telephone bid, please contact our Client Services Department a minimum of 24 hours prior to the sale.

Online

Web users may place absentee bids online from anywhere in the world. To bid online, please visit our website at www.bonhams.com/us.

We are pleased to make our live online bidding facility available to bidders in this sale.

Additional terms and conditions of sale relating to online bidding will apply. Please see www.bonhams.com/24099 or contact the Client Services Department to obtain information and learn how you can register and bid online in this sale.

Bid Increments

Bonhams generally uses the following increment multiples as bidding progresses:

\$50-200	by \$10s
\$200-500	by \$20/50/80s
\$500-1,000	by \$50s
\$1,000-2,000	by \$100s
\$2,000-5,000	by \$200/500/800s
\$5,000-10,000	by \$500s
\$10,000-20,000	by \$1,000s
\$20,000-50,000	by \$2,000/5,000/8,000s
\$50,000-100,000	by \$5,000s
\$100,000-200,000	by \$10,000s
above \$200,000	at auctioneer's discretion

The auctioneer may split or reject any bid at any time at his or her discretion as outlined in the Conditions of Sale.

Currency Converter

Solely for the convenience of bidders, a currency converter may be provided at Bonhams sales. The rates quoted for conversion of other currencies to U.S. Dollars are indications only and should not be relied upon by a bidder, and neither Bonhams nor its agents shall be responsible for any errors or omissions in the operation or accuracy of the currency converter.

Buyer's Premium

A buyer's premium is added to the winning bid price of each individual lot purchased, at the rates set forth in the Conditions of Sale. The winning bid price plus the premium constitute the purchase price for the lot. Applicable sales taxes are computed based on this figure, and the total becomes your final purchase price.

Unless specifically illustrated and noted, fine art frames are not included in the estimate or purchase price. Bonhams accepts no liability for damage or loss to frames during storage or shipment.

All sales are final and subject to the Conditions of Sale found in our catalogs, on our website, and available at the reception desk.

Payment

All buyers are asked to pay and pick up by 3pm on the business day following the auction. Payment may be made to Bonhams by cash, checks drawn on a U.S. bank, money order, wire transfer, or by Visa, MasterCard, American Express or Discover credit or charge card or debit card. All items must be paid for within 5 business days of the sale. Please note that payment by personal or business check may result in property not being released until purchase funds clear our bank.

Sales Tax

Residents of states listed in Paragraph 1 of the Conditions of Sale must pay applicable sales tax. Other state or local taxes (or compensation use taxes) may apply. Sales tax will be automatically added to the invoice unless a valid resale number has been furnished or the property is shipped via

common carrier to destinations outside the states listed in the Conditions of Sale. If you wish to use your resale license please contact Cashiers for our form.

Shipping & Removal

Buyers are to review the Offsite Sold Property Storage page for a list of lots that will be removed to the offsite warehouse of Box Brothers. These designated lots must be retrieved by the buyer prior to the day and time designated on the Offsite Sold Property Storage page. If buyers of these designated lots also buy other lots, such as decorations, rugs or works of art, these lots may also be removed to the warehouse of Box Brothers, so all lots remain together and customers can collect or ship from one location. All other items will remain at Bonhams for a period of 21 days, after which time they may be transferred to offsite storage. [Wine, Jewelry, Natural History, Collectibles, 20th Century Decorative Arts, Rugs, Native American Art, Tribal Art](#) and most [Arms & Armor](#) auctions are not included in this policy.

Box Brothers San Leandro (for San Francisco auctions only)
1471 Doolittle Drive, San Leandro, CA 94577
Tel (800) 942 6822; Fax (510) 628 8454

Box Brothers Los Angeles (for Los Angeles auctions only)
220 W. Ivy Ave, Unit C, Inglewood, Ca 90302
+1 (310) 419 9915 or +1 (800) 474 7447

Box Brothers is open Monday-Friday 8am-5pm with Saturday and Sunday hours available. Buyers must contact Box Brothers 24 hours in advance of pickup. Appointments are required.

Bonhams can accommodate shipping for certain items. Please contact our Cashiers Department for more information or to obtain a quote. Refer to Conditions of Sale for special terms governing the shipment of Arms and Wine. Shipments are made during weekday business hours up to four weeks after payment is received. Carriers are not permitted to deliver to P.O. Boxes.

International buyers are responsible for all import/export customs duties and taxes. An invoice stating the actual purchase price(s) will accompany all international purchases.

Simultaneous sale property collection notice:

If this sale previews in multiple cities, please see the title page for details regarding final location of property for collection.

Handling and Storage Charges

Please note: For sold lots removed to Box Brothers, there will be no post-sale storage charge for lots collected within 5 days from the sale date. For lots that remain at Bonhams, there will be no post-sale storage charge for lots collected within 21 days of the sale date. Handling fees may apply.

Lots uncollected at Bonhams after 21 days may be removed to the warehouse of Box Brothers. Handling and storage fees will apply.

Insurance: All sold lots are insured by Box Brothers at the sum of the hammer price plus buyer's premium.

Please refer to Box Brothers for a list of Handling, Storage and Insurance fees.

Payment

Payments for purchased lots must be made directly to Bonhams. Box Brothers will not release property to a buyer unless the buyer has paid Bonhams first. All charges for handling and storage due to Box Brothers must be paid by the time of collection from their warehouse. Please telephone Box Brothers at +1 (800) 474 7447 in advance to ascertain the amount due. **Lots will only be released from Box Brothers' warehouse with a "Release Order" obtained from the cashier's office at Bonhams.**

The removal/storage and/or shipment by Box Brothers of any lots will be subject to their standard Conditions of Business, copies of which are available at Bonhams or from Box Brothers directly.

Auction Results

To find out the final purchase price for any lot following the sale, please call our automated auction results line at +1 (800) 223 2854 ext. 3400. Auction results are usually available on the next business day following the sale or online at www.bonhams.com/us.

Catalog Order Form

Bonhams

Please check the Auction Catalog(s) you would like to receive, complete the address and payment information below and send the completed form via email to catalogs.us@bonhams.com, or via fax at (415) 861 8951, or mail to:

Bonhams
220 San Bruno Avenue
San Francisco, California 94103

If you have any questions please contact us at +1 (800) 223 2854

Category Name	Internal	Domestic Address*	International Address*	Issues per year**
19th CENTURY PAINTINGS (Including Russian and Dogs in Art)	PIC41	<input type="checkbox"/> \$200	<input type="checkbox"/> \$280	5
20TH CENTURY FURNITURE & DECORATIVE ARTS	FRN21	<input type="checkbox"/> \$160	<input type="checkbox"/> \$200	4
AFRICAN, OCEANIC & PRE-COLUMBIAN ART	TRI12	<input type="checkbox"/> \$120	<input type="checkbox"/> \$150	3
AMERICAN & CALIFORNIA WESTERN PAINTINGS & SCULPTURE	PIC40	<input type="checkbox"/> \$200	<input type="checkbox"/> \$250	5
ARMS, ARMOR AND MODERN SPORTING GUNS	ARM10	<input type="checkbox"/> \$80	<input type="checkbox"/> \$100	2
ASIAN WORKS OF ART	ASN10	<input type="checkbox"/> \$360	<input type="checkbox"/> \$430	9
BONHAMS QUARTERLY MAGAZINE	MAGB	<input type="checkbox"/> \$30		4
BOOKS, MANUSCRIPTS & RELATED CATEGORIES	BKS10	<input type="checkbox"/> \$320	<input type="checkbox"/> \$400	8
COINS AND BANKNOTES	CNS10	<input type="checkbox"/> \$160	<input type="checkbox"/> \$200	4
CONTEMPORARY ART (Including Made in California)	PIC50 & PIC52	<input type="checkbox"/> \$200	<input type="checkbox"/> \$250	5
ENTERTAINMENT MEMORABILIA & COLLECTABLES	COL10	<input type="checkbox"/> \$160	<input type="checkbox"/> \$200	4
EUROPEAN & AMERICAN FURNITURE & DECORATIVE ARTS	FRN20	<input type="checkbox"/> \$320	<input type="checkbox"/> \$400	7
IMPRESSIONIST AND MODERN ART	PIC55	<input type="checkbox"/> \$100	<input type="checkbox"/> \$120	2
INDIAN, HIMALAYAN & SOUTHEAST ASIAN ART	ASN12	<input type="checkbox"/> \$80	<input type="checkbox"/> \$100	2
JAPANESE WORKS OF ART	ASN11	<input type="checkbox"/> \$120	<input type="checkbox"/> \$140	3
JEWELRY	JWL10	<input type="checkbox"/> \$320	<input type="checkbox"/> \$400	8
MADE IN CALIFORNIA CONTEMPORARY ART	PIC52	<input type="checkbox"/> \$80	<input type="checkbox"/> \$100	2
MARITIME PAINTINGS AND DECORATIVE ARTS	COL11	<input type="checkbox"/> \$80	<input type="checkbox"/> \$100	2
MOTOR CARS, MOTORCYCLES & AUTOMOBILIA	MOT10 & MOT20	<input type="checkbox"/> \$330	<input type="checkbox"/> \$390	6
MOTORCYCLES	MOT20	<input type="checkbox"/> \$40	<input type="checkbox"/> \$50	1
NATIVE AMERICAN ART	NTV10	<input type="checkbox"/> \$120	<input type="checkbox"/> \$150	3
NATURAL HISTORY, GEMS, MINERALS & LAPIDARY	NAT10	<input type="checkbox"/> \$120	<input type="checkbox"/> \$150	3
ORIENTAL RUGS AND CARPETS	CPT10	<input type="checkbox"/> \$160	<input type="checkbox"/> \$200	3
PHOTOGRAPHS	PIC44	<input type="checkbox"/> \$120	<input type="checkbox"/> \$150	3
PRINTS	PIC43	<input type="checkbox"/> \$120	<input type="checkbox"/> \$150	3
SPACE MEMORABILIA	BKS11	<input type="checkbox"/> \$40	<input type="checkbox"/> \$50	1
WATCHES	JWL11	<input type="checkbox"/> \$120	<input type="checkbox"/> \$150	3
WINES & WHISKY	WIN10	<input type="checkbox"/> \$280	<input type="checkbox"/> \$350	5
WRITING INSTRUMENTS	COL20	<input type="checkbox"/> \$50	<input type="checkbox"/> \$70	2
ALL CATEGORIES	ALLCAT	<input type="checkbox"/> \$4,500	<input type="checkbox"/> \$5,600	112

**The number of auction catalogs and sales listed for a subscription are strictly estimates. We are not responsible for refunds or credits if the number of sales alters from the estimate. Some of the above categories may include our auctions in other locations.

Method of Payment

Check/Money Order enclosed for \$: _____
Payable to Bonhams & Butterfields

Visa Mastercard American Express

Card Number _____ 16-digit Number

Expiration Date ____ / ____ CVV ____

Cardholder Name _____

Address _____

City _____ State __ Zip _____ Country _____

Signature _____ Date _____

Send Catalogs to:

Name _____

Address _____

City _____ State __ Zip _____ Country _____

Telephone _____ Fax _____

E-mail _____

Client Number (internal use only) _____

CONTACTS

OFFICERS

Malcolm Barber
Co-Chairman

Matthew Girling
Chief Executive Officer

Laura King Pfaff †
Chairman Emeritus

Leslie Wright
Vice President, Trusts and Estates

Jon King
Vice President, Business Development

Vice Presidents, Specialists
Susan F. Abeles
Rupert Banner
Judith Eurich
Mark Fisher
Martin Gammon
Dessa Goddard
Jakob Greisen
Scot Levitt
Mark Osborne
Brooke Sivo
Catherine Williamson

REPRESENTATIVES

Arizona

Terri Adrian-Hardy, (480) 994 5362

California - Central Valley

David Daniel, (916) 364 1645

California - Palm Springs

Brooke Sivo, (760) 350 4255

Colorado - Denver

Julie Segraves, (720) 355 3737 †

Florida

Jon King
(561) 651 7876, Palm Beach
(305) 228 6600, Miami
(954) 566 1630, Ft. Lauderdale

Georgia

Mary Moore Bethea, (404) 842 1500 †

Illinois

Ricki Harris
(773) 267 3300, (773) 680 2881

Massachusetts/Boston/New England

Amy Corcoran, (617) 742 0909

Nevada

David Daniel, (775) 831 0330

New Jersey

Alan Fausel, (973) 997 9954 †

New Mexico

Michael Bartlett, (505) 820 0701

Oregon and Idaho

Sheryl Acheson, (503) 312 6023

Pennsylvania

Alan Fausel, (610) 644 1199 †

Texas

Amy Lawch, (202) 333 1696 †

Virginia

Gertraud Hechl, (713) 621 5988 †

Washington

Heather O'Mahony, (206) 218 5011

Canada

Toronto, Ontario

Jack Kerr-Wilson, (416) 462 9004 †

Montreal, Quebec

David Kelsey, (514) 894 1138 †

BONHAMS *

NEW YORK DEPARTMENTS
580 Madison Avenue
New York, New York 10022
(212) 644 9001

Books & Manuscripts

Tom Lamb, (917) 206-1640

Chinese Works of Art & Paintings

Bruce MacLaren, (917) 206 1677
Nicolas Rice, (917) 206 1622

Collectors' Motorcars & Motorcycles

Rupert Banner, (212) 461 6515
Eric Minoff, (917) 206 1630
Evan Ide,

Fine Art

American

Kayla Carlsen, (917) 206 1699

Contemporary

Jeremy Goldsmith, (917) 206 1656
Megan Murphy, (212) 644 9020

European Paintings

Madalina Lazen, (212) 644 9108

Impressionist & Modern

William O'Reilly, (212) 644 9135

Himalayan Art

Mark Rasmussen, (917) 206 1688

Japanese Works of Art

Jeff Olson, (212) 461 6516

Jewelry

Susan F. Abeles, (212) 461 6525
Caroline Morrissey, (212) 644 9046
Camille Barbier (212) 644 9035

Maritime Paintings & Works of Art

Gregg Dietrich, (212) 644 9001 †

Photographs & Prints

Shawna Brickley, (917) 206 1690

Russian Fine & Decorative Arts

Yelena Harbick, (212) 644 9136

Trusts & Estates

Sherri Cohen, (917) 206 1671

Watches & Clocks

Jonathan Snellenburg, (212) 461 6530

Wine & Whisky

(415) 503 3319

CLIENT SERVICES DEPARTMENT

San Francisco

(415) 861 7500
(415) 861 8951 fax

Los Angeles

(323) 850 7500
(323) 850 6090 fax

Monday - Friday, 8.30am to 5pm

BONHAMS *

SAN FRANCISCO DEPARTMENTS
220 San Bruno Avenue
San Francisco California 94103
(800) 223 2854

20th Century Fine Art

Dane Jensen, ext. 65451

Arms & Armor

Paul Carella, ext. 23360
James Ferrell, ext. 23332

Asian Works of Art

Dessa Goddard, ext. 23333

Books & Manuscripts

Adam Stackhouse, ext. 23266

Decorative Arts

Jennifer Kurtz, ext. 65478

Furniture & Decorative Arts, European

Andrew Jones, ext. 65432

Jewelry & Watches

Shannon Beck, ext. 23306

Collectors' Motorcars & Motorcycles

Mark Osborne, ext. 23353
Jakob Greisen, ext. 23284

Museum Services

Laura King Pfaff, ext. 23210

Native American Art

Ingmars Lindbergs, ext. 23393

California & Western Paintings & Sculpture

Aaron Bastian, ext. 23241

Photographs

Prints

Judith Eurich, ext. 23259

Space History

Adam Stackhouse, ext. 23266

Trusts & Estates

Victoria Richardson, ext. 23207
Celeste Smith, ext. 23214

Wine & Whisky

Erin McGrath, ext. 23319

Writing Instruments

Ivan Briggs, ext. 23255

Watches

Ivan Briggs, ext. 23255

BONHAMS *

LOS ANGELES DEPARTMENTS
7601 W. Sunset Boulevard
Los Angeles California 90046
(800) 223 2854

20th Century Decorative Arts

Angela Past, ext. 65422

20th Century Fine Art

Alexis Chompaisal, ext. 65469

African, Oceanic & Pre-Columbian Art

Fredric W. Backlar, ext. 65416 †

Books & Manuscripts

Catherine Williamson, ext. 65442

Coins & Banknotes

Paul Song, ext. 65455

Entertainment Memorabilia

Catherine Williamson, ext. 65442
Dana Hawkes, (978) 283 1518

Furniture & Decorative Arts

Andrew Jones, ext. 65432

Furniture & Decorative Arts, American

Brooke Sivo, ext. 65420

Jewelry & Watches

Dana Ehrman, ext. 65407
Claire De Biasio-Paris, ext. 65483

Collectors' Motorcars & Motorcycles

Nick Smith, ext. 65470

Contemporary Art

Dane Jensen, ext. 65451

Photographs

Prints

Morisa Rosenberg, ext. 65435

Natural History

Thomas E. Lindgren, ext. 65437 †
Claudia Florian, G.J.G., ext. 65437 †

California & Western Paintings & Sculpture

Scot Levitt, ext. 65425

Paintings - European

Mark Fisher, ext. 65488

Silver

Aileen Ward, ext 65463

Trusts & Estates

Leslie Wright, ext. 65408
Joseph Francaviglia, ext. 65443

* Indicates saleroom

† Indicates independent contractor

The following information is recorded and available 24 hours a day, 7 days a week, through our telephone system:

- Auction and Preview Information
- Directions to Bonhams's salesrooms
- Automated Auction Results

Auction Registration Form

(Attendee / Absentee / Online / Telephone Bidding)

Please circle your bidding method above.

--	--	--	--

Paddle number (for office use only)

General Notice: This sale will be conducted in accordance with Bonhams Conditions of Sale, and your bidding and buying at the sale will be governed by such terms and conditions. Please read the Conditions of Sale in conjunction with the Buyer's Guide relating to this sale and other published notices and terms relating to bidding. Payment by personal or business check may result in your property not being released until purchase funds clear our bank. Checks must be drawn on a U.S. bank.

Notice to Absentee Bidders: In the table below, please provide details of the lots on which you wish to place bids at least 24 hours prior to the sale. Bids will be rounded down to the nearest increment. Please refer to the Buyer's Guide in the catalog for further information relating to instructions to Bonhams to execute absentee bids on your behalf. Bonhams will endeavor to execute bids on your behalf but will not be liable for any errors or non-executed bids.

Notice to First Time Bidders: New clients are requested to provide photographic proof of ID - passport, driving license, ID card, together with proof of address - utility bill, bank or credit card statement etc. Corporate clients should also provide a copy of their articles of association / company registration documents, together with a letter authorizing the individual to bid on the company's behalf. Failure to provide this may result in your bids not being processed. For higher value lots you may also be asked to provide a bankers reference.

Notice to online bidders; If you have forgotten your username and password for www.bonhams.com, please contact Client Services.

If successful

- I will collect the purchases myself
- Please contact me with a shipping quote (if applicable)
- I will arrange a third party to collect my purchase(s)

Please mail or fax the completed Registration Form and requested information to:

Bonhams Client Services Department
 7601 Sunset Blvd
 Los Angeles, California 90046
 Tel +1 (800) 223 2854
 Fax +1 (323) 850 6090
 Automated results
 Tel +1 (415) 503 3410

Bonhams

Sale title: California Jewels		Sale date: Tuesday December 13, 2016	
Sale no. 24099		Sale venue: Los Angeles	
General Bid Increments:			
\$10 - 200by 10s		\$10,000 - 20,000by 1,000s	
\$200 - 500by 20 / 50 / 80s		\$20,000 - 50,000by 2,000 / 5,000 / 8,000s	
\$500 - 1,000by 50s		\$50,000 - 100,000by 5,000s	
\$1,000 - 2,000by 100s		\$100,000 - 200,000by 10,000s	
\$2,000 - 5,000by 200 / 500 / 800s		above \$200,000at the auctioneer's discretion	
\$5,000 - 10,000by 500s		The auctioneer has discretion to split any bid at any time.	
Customer Number		Title	
First Name		Last Name	
Company name (to be invoiced if applicable)			
Address			
City		County / State	
Post / Zip code		Country	
Telephone mobile		Telephone daytime	
Telephone evening		Fax	
Telephone bidders: indicate primary and secondary contact numbers by writing ① or ② next to the telephone number.			
E-mail (in capitals) _____			
By providing your email address above, you authorize Bonhams to send you marketing materials and news concerning Bonhams and partner organizations. Bonhams does not sell or trade email addresses.			
I am registering to bid as a private client <input type="checkbox"/>		I am registering to bid as a trade client <input type="checkbox"/>	
Resale: please enter your resale license number here _____ We may contact you for additional information.			

SHIPPING	
Shipping Address (if different than above):	
Address: _____	Country: _____
City: _____	Post/ZIP code: _____

Please note that all telephone calls are recorded.

Type of bid (A-Absentee, T-Telephone)	Lot no.	Brief description (In the event of any discrepancy, lot number and not lot description will govern.) If you are bidding online there is no need to complete this section.	MAX bid in US\$ (excluding premium and applicable tax) Emergency bid for telephone bidders only*

You instruct us to execute each absentee bid up to the corresponding bid amount indicated above.

* Emergency Bid: A maximum bid (exclusive of Buyer's Premium and tax) to be executed by Bonhams only if we are unable to contact you by telephone or should the connection be lost during bidding.

BY SIGNING THIS FORM YOU AGREE THAT YOU HAVE READ AND UNDERSTAND OUR CONDITIONS OF SALE AND SHALL BE LEGALLY BOUND BY THEM, AND YOU AGREE TO PAY THE BUYER'S PREMIUM, ANY APPLICABLE TAXES, AND ANY OTHER CHARGES MENTIONED IN THE BUYER'S GUIDE OR CONDITIONS OF SALE. THIS AFFECTS YOUR LEGAL RIGHTS.	
Your signature: _____	Date: _____



⌘ 1793

Bonhams

7601 W. Sunset Boulevard
Los Angeles, California 90046

+1 323 850 7500

+1 323 850 6090 (fax)

